

# Bell Bay

## Port Map



TasPorts



# Bell Bay

## Overview



Located at Bell Bay on the eastern bank of the Tamar River 48 kilometres north of Launceston, the port is adjacent to a major Tasmanian industrial estate. The port is a major port for domestic and international bulk goods as well as container services.

## Harbour Control

Tasports control shipping movements, berth and shed allocations, cargo storage areas and equipment requirements.

## Communications

The port Communications Centre at Bell Bay is manned 24 hours and operates a radio service on the following frequencies:

VHF Channel 16, 12 and 67

CB 27.88 mHZ

Radio Call Sign: "Bell Bay Port Control"

Pilot Call Sign: "Tamar Pilot"

Telephone: 03 6380 3075

Fax: 03 6380 3043

## Pilotage

The Pilot service is provided by the port and is compulsory for all vessels over 35 metres in length overall, unless a valid pilot exemption certificate is held.

Contact the port giving ETA 24 hours before arrival and give updated ETA to Bell Bay on VHF Radio four hours before arrival at the PILOT BOARDING GROUND.

It is essential to notify the port of changes to a vessels ETA or ETD as soon as possible.

Pilots board from launch (fitted with Channels 12 & 16, call-sign "Tamar Pilot"), 3.0 nautical miles N.W. of Low Head Light House.

When approaching the pilot boarding ground vessels should not proceed inside port limits.

## Towage

Towage services are operated by Tasports with two tugs based at Inspection Head Wharf.

Other tugs are available at several hours notice from all other working ports.

## Navigation

### 1. Lower Reaches

#### a) Draft Limitations

Determined by a 1.4 metre under the keel clearance giving maximum draft at Low "Water 9.0 metres (at zero tide), and maximum draft at High water 11.5 metres.

#### b) Size Limitations

For vessels exceeding 250m length and/or 45m beam with draft in excess of 9 metres contact the Bell Bay Port Office.

#### c) Time Limitations

ENTRY: Vessels over 140m length enter on flood tide only. Earliest entry is L.W. at Low Head. Vessels then enter according to draught through to 30 min. before H.W. at Low Head. Pilots board approximately 15 minutes before these times.

DEPARTURE: Vessels over 170m length.

Large vessels berthed at Woodchip Berths – from 1 hour before up to H.W. or L.W. (Low Head) depending on draught and tide. Vessels berthed at all other down river berths – from 1 hour before to 1 hour after H.W. or L.W. (Low Head) depending on draught of vessel and tide.

SHIFTING OF VESSELS: The shifting of vessels of any size from berth to berth within the port will be undertaken 24 hours a day, subject to any special requirements at the time.

#### d) Night Navigation (Entrance Channel)

As per above.

### 2. Upper Reaches

The Upper Reaches are navigable to the City of Launceston. Maximum Length: 70m. | Draft: 5.5m.

### Special Conditions

Contact Tasports for all vessels and conditions.

# Bell Bay

## Overview (continued)



### Port Limits

A circle with a radius of 3 nautical miles centred on Low Head Lighthouse.

#### References

Australian Pilot "Vol. II. Charts AU" S 167 and 168.

#### Pilot Boarding Ground

Lat: 40 59.75'S, Long: 146 43.9'E.

#### Time Zone

G.M.T. plus 10 hours (Eastern Standard Time).

G.M.T. plus 11 hours (Tasmanian Summer Time, October to March).

#### Datum

**Lower Reaches:** L.A.T. (Lowest Astronomical Tide) – A.H.D.\* minus 1.997m.

**Upper Reaches:** L.W.O.S.T. (Low Water Ordinary Spring Tide) – A.H.D. minus 2.260m.

\*A.H.D. – Australian Height Datum.

#### Tidal Range

Low Head – average 2.3m

#### Emergency Services

All Emergencies Contact:

BELL BAY PORT CONTROL on (03) 6380 3013

#### Depths Alongside

(At Lowest Astronomical Tide)

#### Bell Bay Berths:

No. 1 Bell Bay Comalco (Private) 10.4m

No. 2 Bell Bay (Interstate Ro/Ro Container) 8.2m

No. 3 Bell Bay (Temco, Bulk & General) 11.7m

No. 4 Bell Bay (Tankers) 12.0m

No. 5 Container Berth 12.0m

No. 6 Bell Bay Multi Purpose Berth

(Ro/Ro & Container) 9m to 12.0m

#### Long Reach Berths:

Long Reach No.1 Woodchip No.

(Gunns Ltd) 11.5m

Long Reach No. 2 Woodchip S.

(Gunns Ltd) 11.2m

#### Inspection Head:

No.1 & 2: 9.9m

### Distances Pilot To Pilot

#### In nautical miles

##### Australia

Port Adelaide 585

Botany (Sydney) 498

Brisbane 949

Burnie 38

Devonport 21

Flinders Island-Whitemark 83

Lady Baron 89

Fremantly 1749

Gladstone 1210

Groote Eylandt 2615

Hobart 265

Melbourne (Port Phillip) 192

Newcastle 559

Port Kembla 459

Portland 288

Port Pirie 741

Sydney 505

Townsville 1573

Weipa 2360

Westernport 171

##### Overseas

Auckland 1490

Bombay 5754

Gibraltar (via Suez) 9839

Hamburg (via Suez) 11481

Hong Kong 5391

Kobe 4836

London (via Suez) 11152

London (via Cape) 12042

London (via Magellan Strait) 12579

London (via Panama) 12678

Magellan Strait 5016

New York (via Panama) 9907

Panama 7893

Rio de Janeiro 7384

San Francisco 6879

Shanghai 5254

Singapore (via Cape Leeuwin) 3970

Singapore (via Torres Strait) 4736

Suez 7851

The Cape 5921

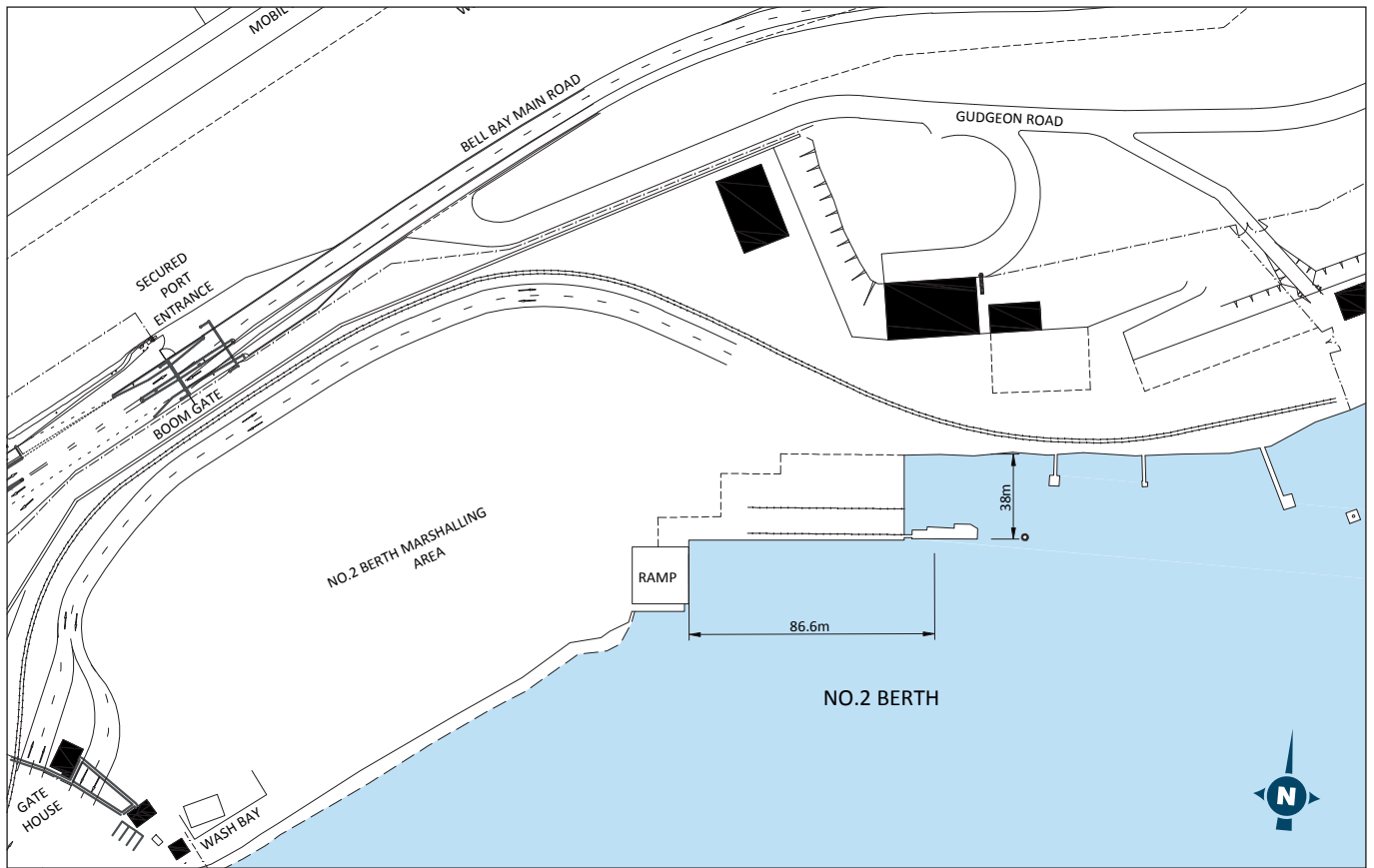
Vancouver 7260

Wellington 1340



# Bell Bay

## No. 2 Berth



**Length Of Wharf:**

86.6m; width 38m.

**Mooring Dolphin:**

227.9m east of ramp end.

**Fender Dolphin:**

116m east of ramp end.

**Depth Alongside:**

8.2m at L.A.T.

**Height Of Deck Above Datum:**

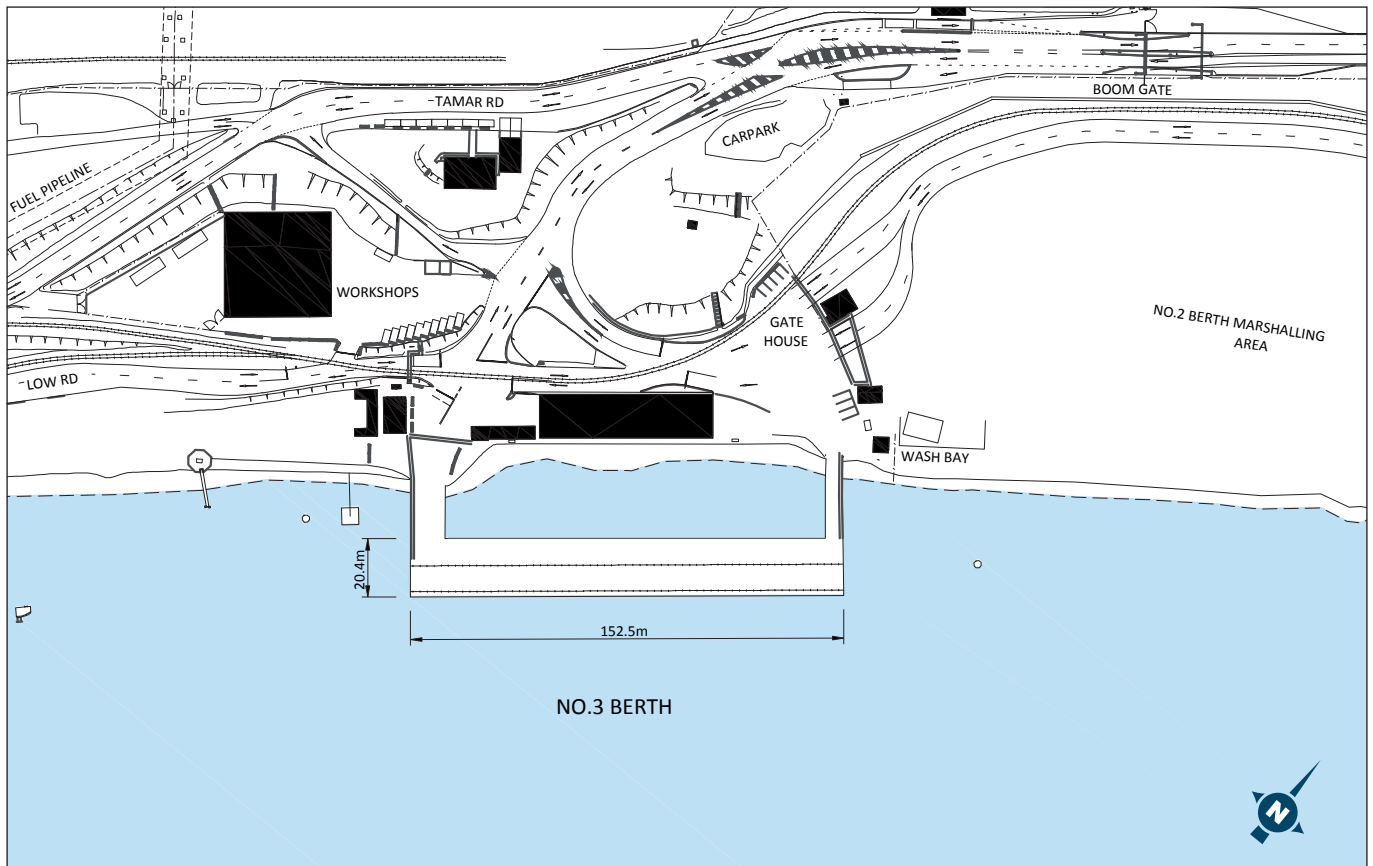
5.03m.

# Bell Bay

## No. 3 Berth – Bulk and General



TasPorts



### *Height Of Deck Above Datum:*

5.18m.

### *Crane:*

19 tonne slewing, luffing, grabbing, traveling crane with railing hatch hopper on rails.

(Manufacturer: Caillard Levage). (Owner TEMCO)

**Lifting Capacity/radius:** 19 tonne at 30m max. radius;  
25 tonne at 24 m max. radius.

**Max radius:** 30m.

**Min. radius:** 10m.

**Tail radius:** 6m.

**Max. outreach from wharf fenders:** 22.49m.

**Max. backreach from wharf fenders:** 37.51m.

**Centre of crane to outer edge of wharf fenders:** 7.51m

**Max. height of bottom of grab above wharf deck/max. radius:** 18m.

**Max. height of hook above wharf deck/max. radius:** 22m.

**Max. depth of bottom of grab below wharf deck/max. radius:** 14m.

**Length of travel:** length of wharf for 108m.

**Associated equipment:** trailing hatch hopper with operator's cabin.

**Estimated unloading rate (grab):** 500 tonnes/hour.

**Average loading rate (grab):** 660 tonnes/hour.

### *Wharf Deck Loading:*

**Deck & approaches:** 4.3 tonnes/sq.m. (5 cwt/sq.ft.)

Up to 140 tonne loads on suitable transporters can be accommodated with reference to Port Engineer.

### *Axle Loading On Deck/Pavement:*

20 tonnes; 17.8 tonnes (forklift).

### *Transit Shed Space:*

744 sq.m.

### *Wharf Power:*

2 x 415V, 30 Amp; 2 x 240V, 10 amp.

### *Telephone:*

**Stevedores Telephone:** (03) 6382 1733

**Temco Wharf Office Telephone:** (03) 6382 0397

### *Fresh Water:*

Available at max. rate of 50 tonnes per hour per connection.

### *Bunkering:*

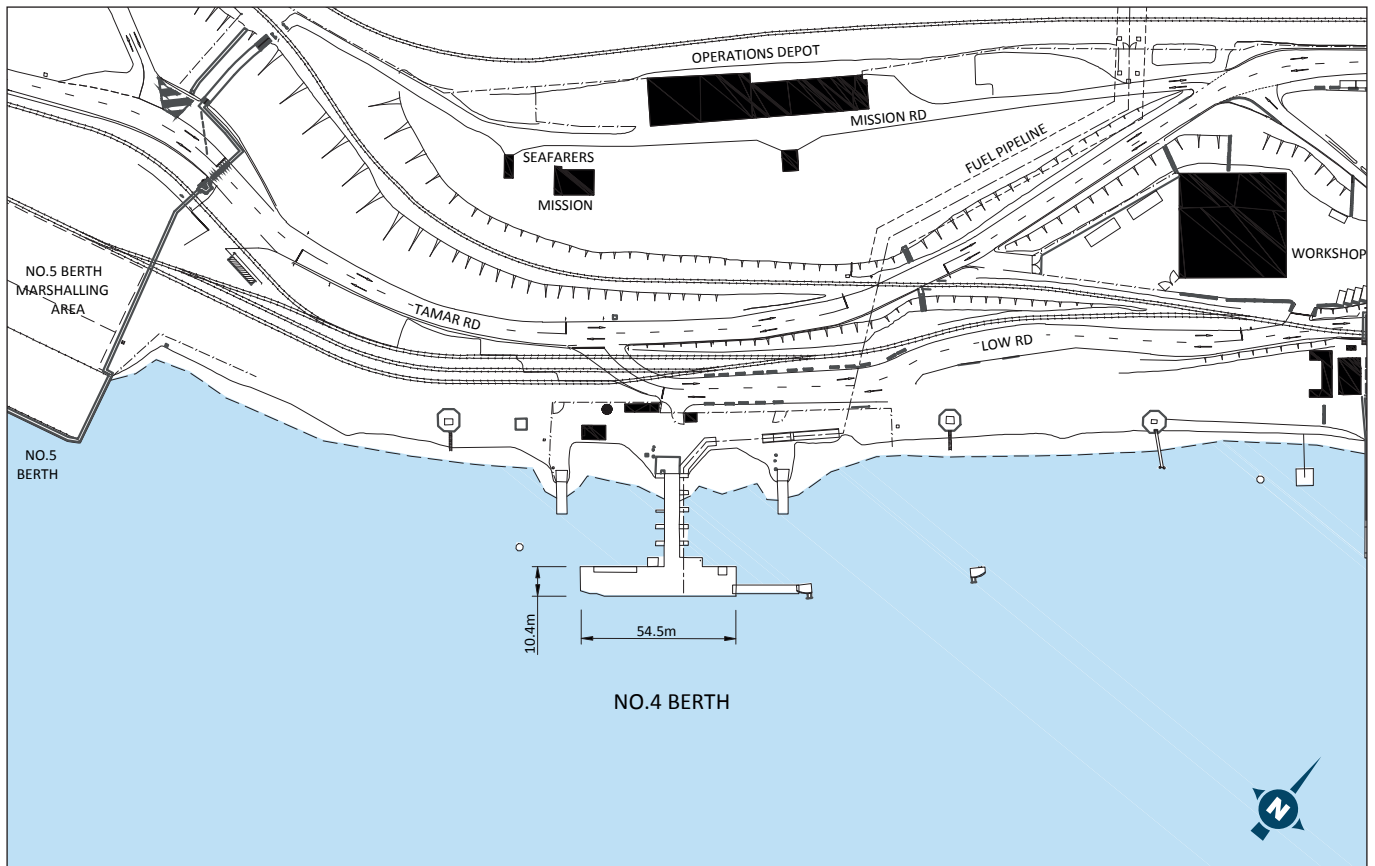
Road tanker.

# Bell Bay

## No. 4 Berth – Petroleum & Other Products



TasPorts



**Seebeck Double Quick Release Hook:**

60 tonne.

**Harbour & Marine Double Quick Release Hook:**

100 tonne.

**Bridgestone Cell Fender:**

C 1600H with anti friction frontal pad.

**Rubber Tyre Fenders:**

18.0 x 25 x 24 ply.

**Capstan**

**Queensland Rubber:**

A1000 x 1500 rubber arch fender.

**Mooring Dolphin:**

Cluster of 6 x 144 B.H.P. piles with 50 tonne bollard.

**Bollard Wharf:**

50 tonne.

2 x TIMBER FENDER PILES WITH TYRE BEHIND.

**Fire Monitor**

# Bell Bay

## No. 4 Berth – Petroleum & Other Products (continued)

### General Description

A “T” head concrete decked berth. Vessels up to 240m can be accommodated at this berth.

#### *Length Of Wharf:*

54.5m; width 10.4m.

#### *Mooring Dolphins:*

356.2m and 179.2m apart.

#### *Two (2) Cell Fenders:*

76.2m apart.

#### *Depth Alongside:*

12 M at L.A.T.

#### *Height Of Deck Above Datum:*

5.0m.

#### *Deck Loading:*

2.5 tonnes per sq.m.

#### *Pipelines:*

2 x 250 mm: one for black and one for clean oil

1 x 100mm: for discharge of L.P. Gas 440 kPa  
(64 lb/sq.in.).

1 x 75mm vapour return line.

Manifold is 19m from downstream fender.

#### *Mobil Oil Tank Farm:*

Bottom of tanks in tank farms 33 m above manifolds on wharf.

#### *Pacific Terminals Bulk Liquids Storage Depot:*

Tanks: 1 x 1300 tonnes, 2 x 100 tonnes, 1 x 50 tonnes.

#### *Fresh Water:*

Available at max. rate of 50 tonnes per hour per connection.

#### *Bunkering:*

Fuel oil 100mm and 150mm connections, rate of 50/60 tonners per hour. Diesel oil by road tanker, 75mm connection at 18 tonnes per 1.25 hours.

#### *Fire Fighting:*

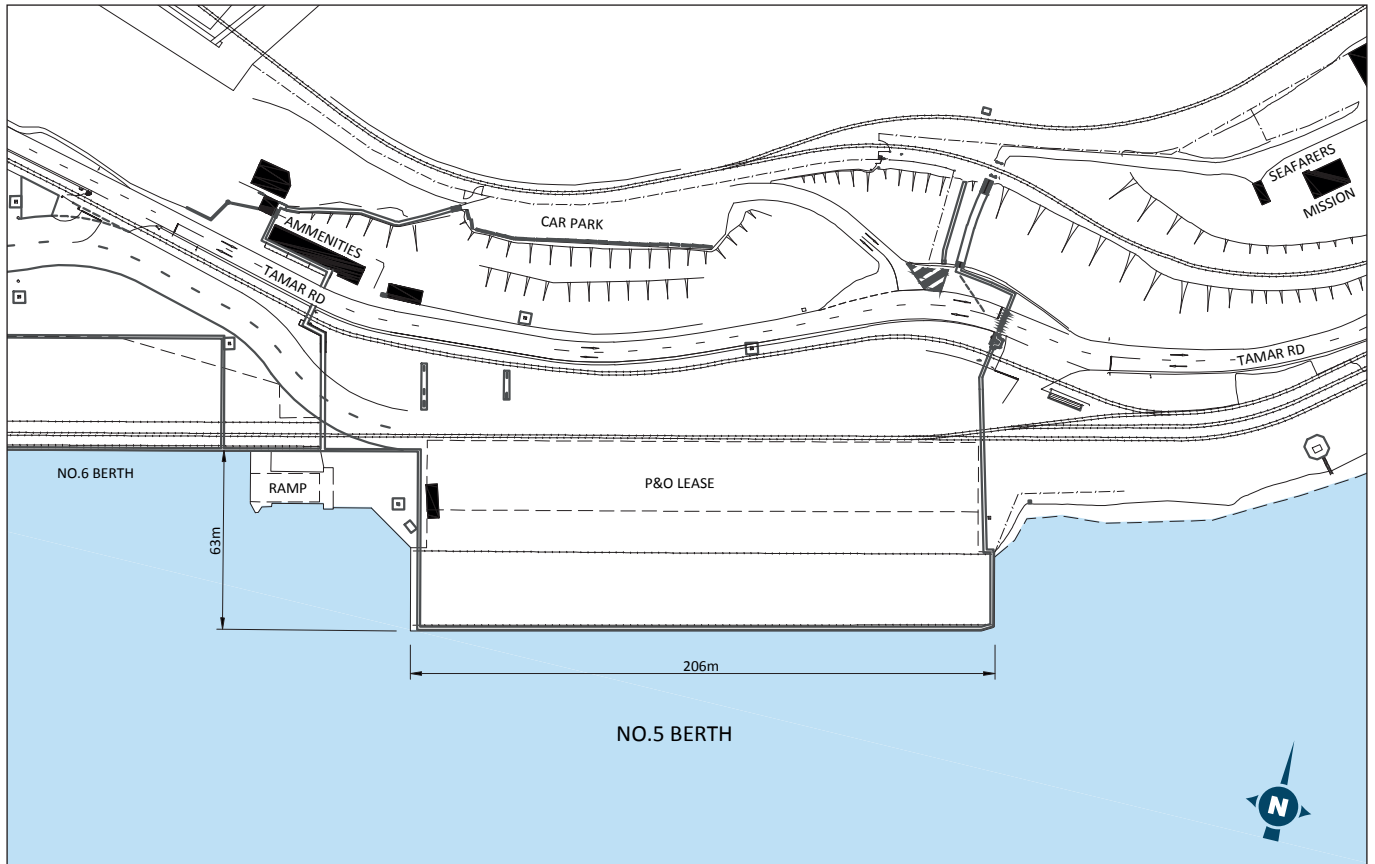
2 fixed remote control “scum” fire monitors 200kw diesel pump with permanent sea suction. Venturi induction of 3% AFFF 18,000 litres of AFFF storage.

# Bell Bay

## No. 5 Berth – Container and General



TasPorts



### Wharf Fenders

#### Queensland Rubber Co:

1000 OD x 600 ID rubber cylinders each corner.

#### Queensland Rubber Co:

700 OD x 450 ID rubber cylinders along face.

#### Bollards:

100 tonne.

50 tonne.



# Bell Bay

## No. 5 Berth – Container and General (continued)

### General Description

A welded beam restrained bulkhead berth backfilled and paved.

#### *Length Of Wharf:*

206m.

#### *Depth Alongside:*

12.0 at L.A.T.

#### *Height Of Deck Above Datum:*

5.00m.

#### *Cranes:*

**(a) Portainer Crane:** (Manufacturer: Deer Park Engineering) (Owner: P&O Ports)

**Capacity and Spreader:** 27.5 Tonnes (20'), 36 Tonnes (40')

**Max. outreach from wharf fenders:** 31.090m (twin lift), 33.520m (single lift & 40')

**Max. backreach from wharf fenders:** 40.915m.

**Max. lift above wharf deck:** 21.03m.

**Max. depth below wharf deck:** 14.59m.

**Hoist Speed Empty:** 74.4/min.

**Hoist Speed Full Capacity Load:** 36.6m/min

**Associated equipment:** Fitted with dual hoist system and twin lift spreader.

**(b) 40 tonne mobile harbour crane,** with standard capacity of 40 tonnes (under hook) and heavy lift capacity of 100 tonnes (under hook). (Manufacturer: Gottwald) (Owner: Patrick Stevedores)

**Standard load/radius limits:** 40 tonnes at 11m to 31m, then reducing to 26.0 tonnes at 42m.

**Heavy lift/load radius limits:** 100 tonnes at 11m to 17m, then reducing to 26.0 tonnes at 42m.

**Max. radius:** 42m.

**Min. radius:** 11m.

**Max. outreach from wharf fenders:** 33.67m.

**Max. backreach from wharf fenders:** 50.33m.

**Centre of crane to outer edge of wharf fenders:** 8.33m.

**Max height of hook above wharf deck/max. radius:** 32m.

**Max depth of hook below wharf deck/max. radius:** 15m.

**Associated equipments/spreaders etc.:** equipped with remote controlled swivel gear, load leveler and fully automatic spreader for handling containers, general cargo and bulk materials. For further details refer to EQUIPMENT section.

#### *Wharf Deck Loading:*

80 tonnes/sq.m.

#### *Wharf Axle Loading:*

80 tonnes.

#### *Marshalling Area:*

2.5ha including wharf deck.

#### *Rail:*

Through centre of marshalling area.

#### *Reefer Outlets:*

168 TEU refrigerated containers.

#### *Wharf Power:*

4 x 415V, 30 Amp, 4 x 240V, 10 Amp.

#### *Fresh Water:*

Available at max rate of 50 tonnes/hour.

#### *Bunkering:*

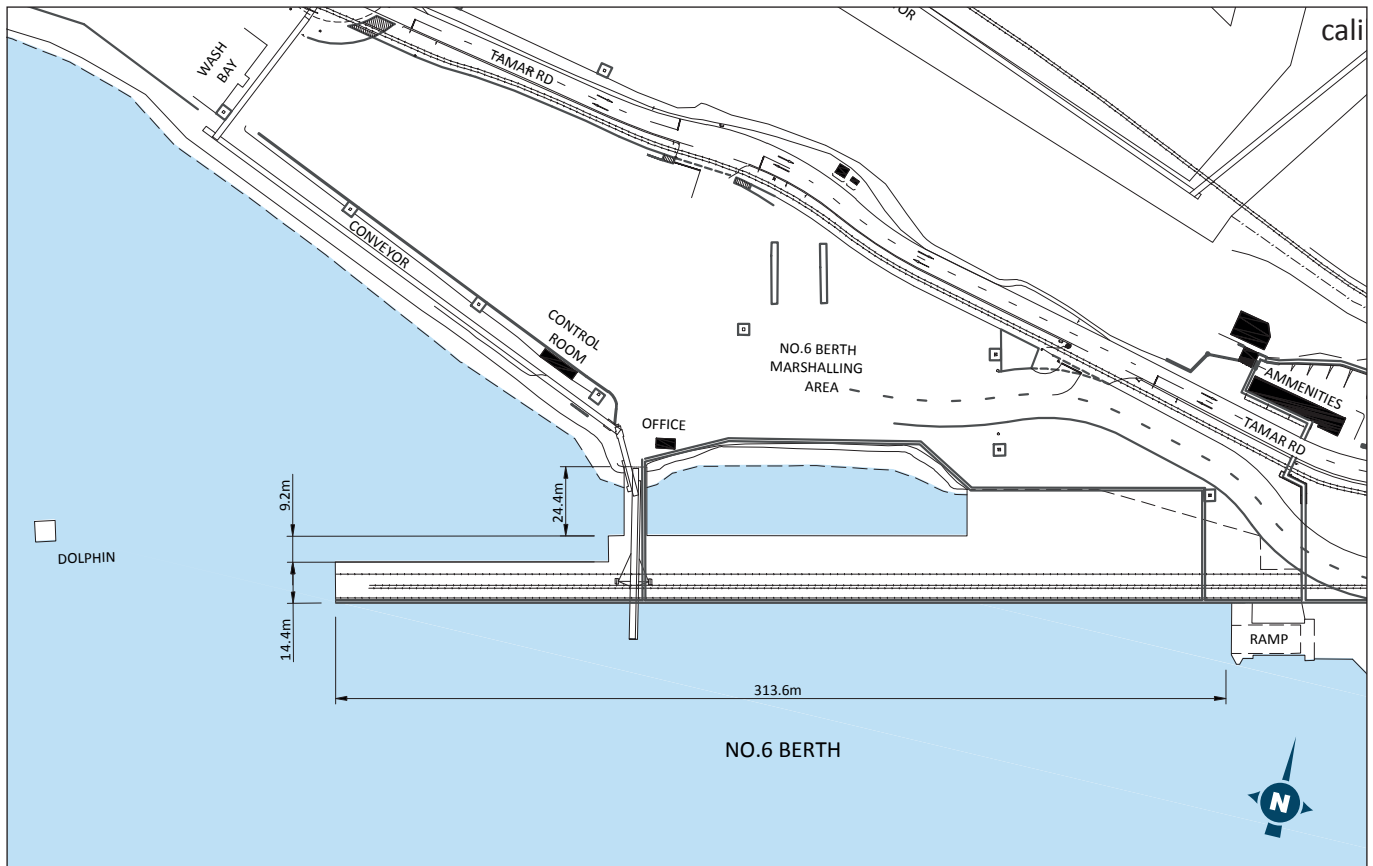
Road tanker.

# Bell Bay

## No.6 Multi-Purpose Berth – Ro/Ro, Container & General



TasPorts



### Wharf Fenders-W To E:

- (a) Bridgestone SUC1250H RE cell type fenders plus anti-friction frontal pads – 13 at 12m centres alternating with 12 tyre fenders; 7 at 14.7m centres alternating with 5 x 2 sets of tyre fenders.
- (b) .30 x .15 .380 rubber cylinder backed waling plus 16 timber piles at 4.9m centres plus restraining chains.
- (c) Timber fender piles x 9 along rear face of wharf.

### Wharf Bollards-W To E:

- (a) 50 tonne x 1 at 15m centres.
- (b) 50 tonne x 8 at 18m centres.
- (c) 50 tonne x 9 at 19.6m centres.
- (d) 50 tonne x 2 at 36m centres and 50 tonne x 2 at 52.5 centres along rear face of wharf.
- (e) 100 tonne x 2 at rear corners of wharf.

### Stern Mooring Bollards:

50 tonne x 2.

### Mooring Dolphin:

3 x 50t QR Hooks, 1 x 100t Bollard.

### Public Telephone

# Bell Bay

## No.6 Multi-Purpose Berth – Ro/Ro, Container & General



### General Description

A concrete decked, steel piled, heavy duty berth designed for Ro/Ro, container, conventional and bulk cargoes. A steel decked bridge 24.4m long x 7.2m wide connects W. marshalling area to the wharf.

#### *Length Of Wharf:*

313.6m.

#### *Depth Alongside:*

9.0 to 12.4 m at L.A.T. (see plan).

#### *Height Of Deck Above Datum:*

5.05m.

#### *Wharf Deck Loading:*

3.23 tonnes/sq.m (672 lb/sq.ft); 1985 extensions. 5 tonnes/sq.m (9.3 cwt/sq.ft.)

#### *Wharf Axle Loading:*

**Deck and pavement:** 50 tonnes.

**1985 deck extension:** 80 tonnes.

#### *Marshalling Area:*

East: 1.8ha; West: 1.5ha Total of 3.3ha or 3.8ha. Including wharf decks.

#### *Transit Shed Space:*

1440sq.m sheds are fitted with exhaust fans for pre-shipment storage of primary produce.

#### *Rail:*

At ship side, full length of berth.