

Title: Virtual Aids to Navigation Established

Port: Port of Devonport

References: EXT HMI 22-68 Return to pre-flood operations

Description: Mariners are advised that:

A Virtual Aid to Navigation (V.AtoN) has been established in the Port of Devonport in the following position, Latitude 41° 09.910' S, Longitude 146° 22.094' E, (*refer Figure 1: Location of Fairway Starboard Virtual AtoN*). The Virtual Beacon is transmitting as a starboard hand.

Note the position mentioned above is to replace the position of the V.AtoN mentioned in EXT HMI 22-68.

Six temporary Virtual Aids to Navigation have also been established within the channel to mark the extent of the channel declared at 7.8m. These temporary V.AtoNs identify a reduced width of the channel in this vicinity. The temporary V.AtoNs are in the following positions (*refer Figure 2: Location of Temporary Virtual AtoN channels marks*).

TEMP WEST INNER 1

Latitude 41° 10.427' S, Longitude 146° 21.846' E
Virtual Beacon, Starboard hand mark

TEMP WEST INNER 3

Latitude 41° 10.453' S, Longitude 146° 21.839' E
Virtual Beacon, Starboard hand mark

TEMP WEST INNER 5

Latitude 41° 10.496' S, Longitude 146° 21.824' E
Virtual Beacon, Starboard hand mark

TEMP WEST INNER 2

Latitude 41° 10.451' S, Longitude 146° 21.927' E
Virtual Beacon, Port hand mark

TEMP WEST INNER 4

Latitude 41° 10.510' S, Longitude 146° 21.905' E
Virtual Beacon, Port hand mark

Issued By	Harbour Master - Tasmania	Date of Issue	21/10/2022	Valid Until	Cancelled	Page 1 of 3
------------------	---------------------------	----------------------	------------	--------------------	-----------	--------------------

TEMP WEST INNER 6

Latitude 41° 10.569' S, Longitude 146° 21.893' E

Virtual Beacon, Port hand mark

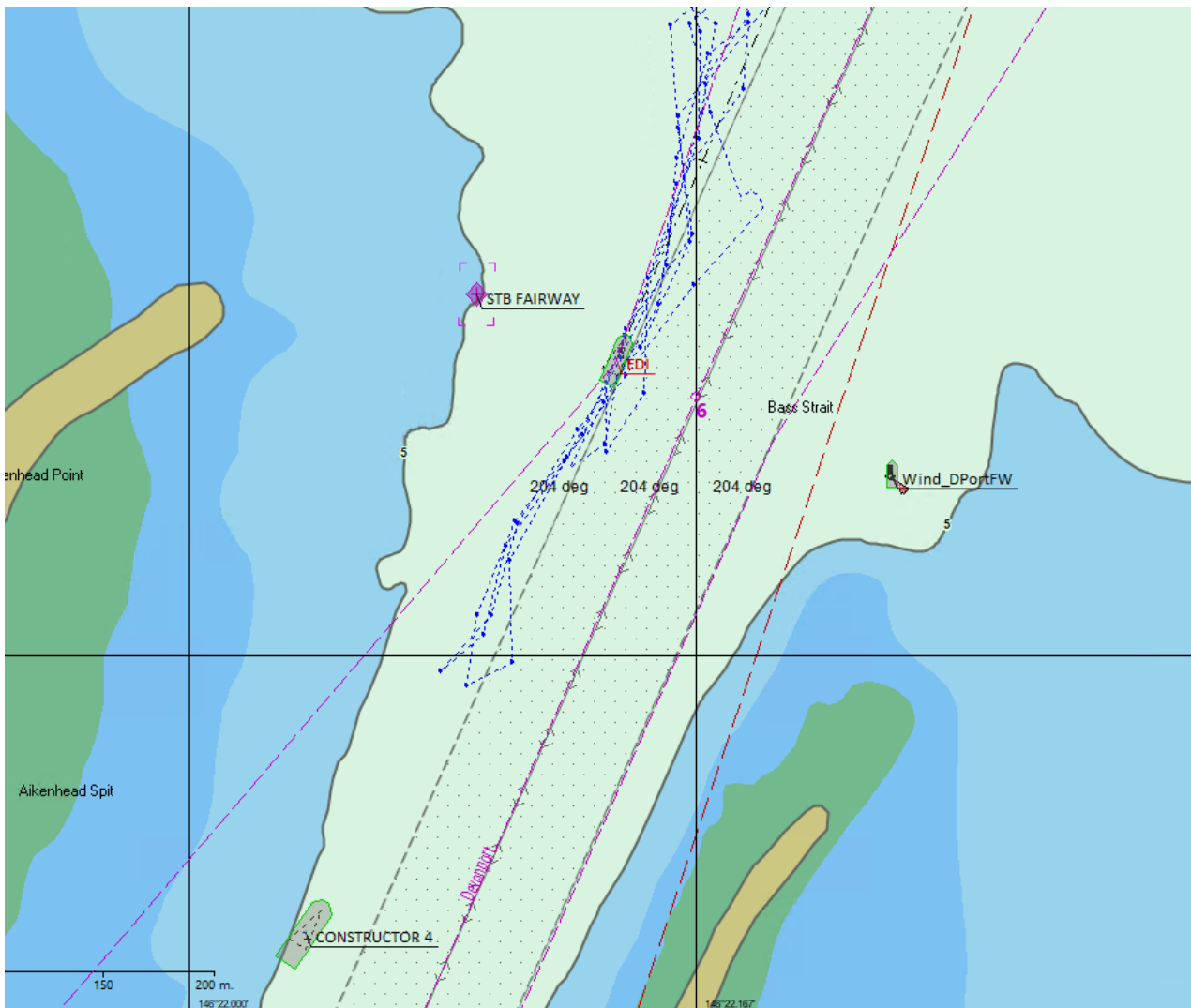


Figure 1: Location of Fairway Starboard Virtual AtoN

Issued By	Harbour Master - Tasmania	Date of Issue	21/10/2022	Valid Until	Cancelled	Page 2 of 3
-----------	---------------------------	---------------	------------	-------------	-----------	-------------



HARBOUR MASTERS INSTRUCTION

TasPorts

EXT HMI 22-73

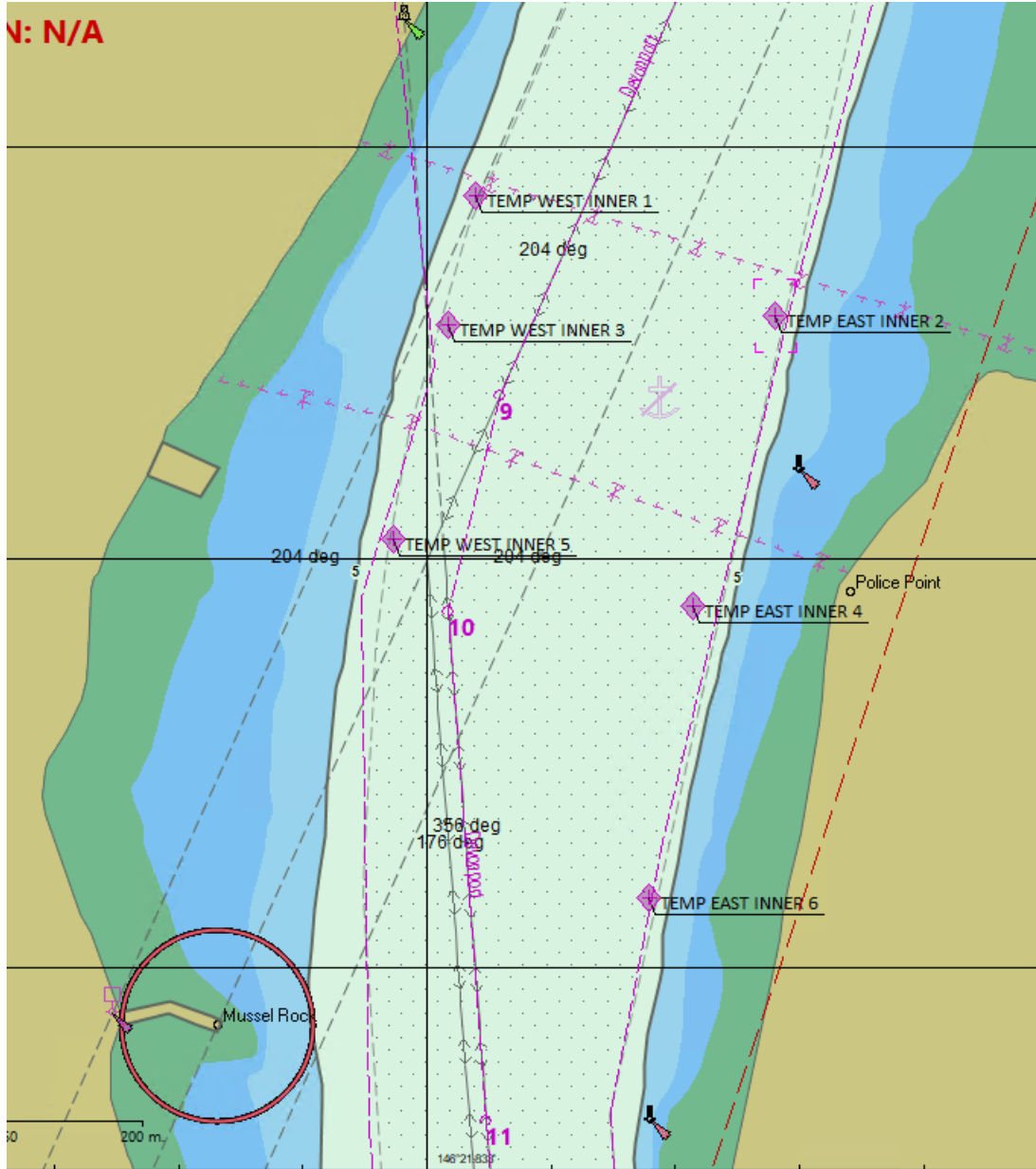


Figure 2: Location of Temporary Virtual AtoN channels marks

Captain Wendy Doran
Harbour Master - Tasmania

Issued By	Harbour Master - Tasmania	Date of Issue	21/10/2022	Valid Until	Cancelled	Page 3 of 3
-----------	---------------------------	---------------	------------	-------------	-----------	-------------