



**NOTES:**

- THE FOLLOWING DRAWINGS ARE DERIVED FROM:
  - REFERENCE DRAWINGS AS LISTED ON DRG: 6A0000-2230-STW-ESC-0008
  - PDA DETAIL SURVEYS:
    - 44135 27-06-2019
    - 44480 13-09-2019
  - DIAL BEFORE YOU DIG
- UNLESS NOTED OTHERWISE THE LOCATION AND DEPTH OF UNDERGROUND SERVICES SHOWN ARE APPROXIMATE ONLY AND THE EXACT LOCATION, DEPTH AND EXTENT OF SERVICES SHALL BE VERIFIED WITH THE APPROPRIATE AUTHORITY, LOCATED, MARKED AND PROTECTED AS REQUIRED.
- THE APPROPRIATE DUTY OF CARE RESPONSIBILITIES AND OPERATIONAL PROTOCOLS ESTABLISHED BY THE RELEVANT AUTHORITIES SHALL BE ADHERED TO. THIS INCLUDES RESTRICTIONS TO EXCAVATION AND OTHER CONSTRUCTION ACTIVITY IN CLOSE PROXIMITY TO EXISTING SERVICES, INFRASTRUCTURE AND OPERATIONAL CONSTRAINTS.
- THE FOLLOWING DRAWING SET MUST ONLY BE DISTRIBUTED IN FULL COLOUR. TASPORTS ACCEPTS NO LIABILITY ARISING FROM FAILURE TO COMPLY WITH THIS REQUIREMENT.

**LINETYPE LEGEND:**

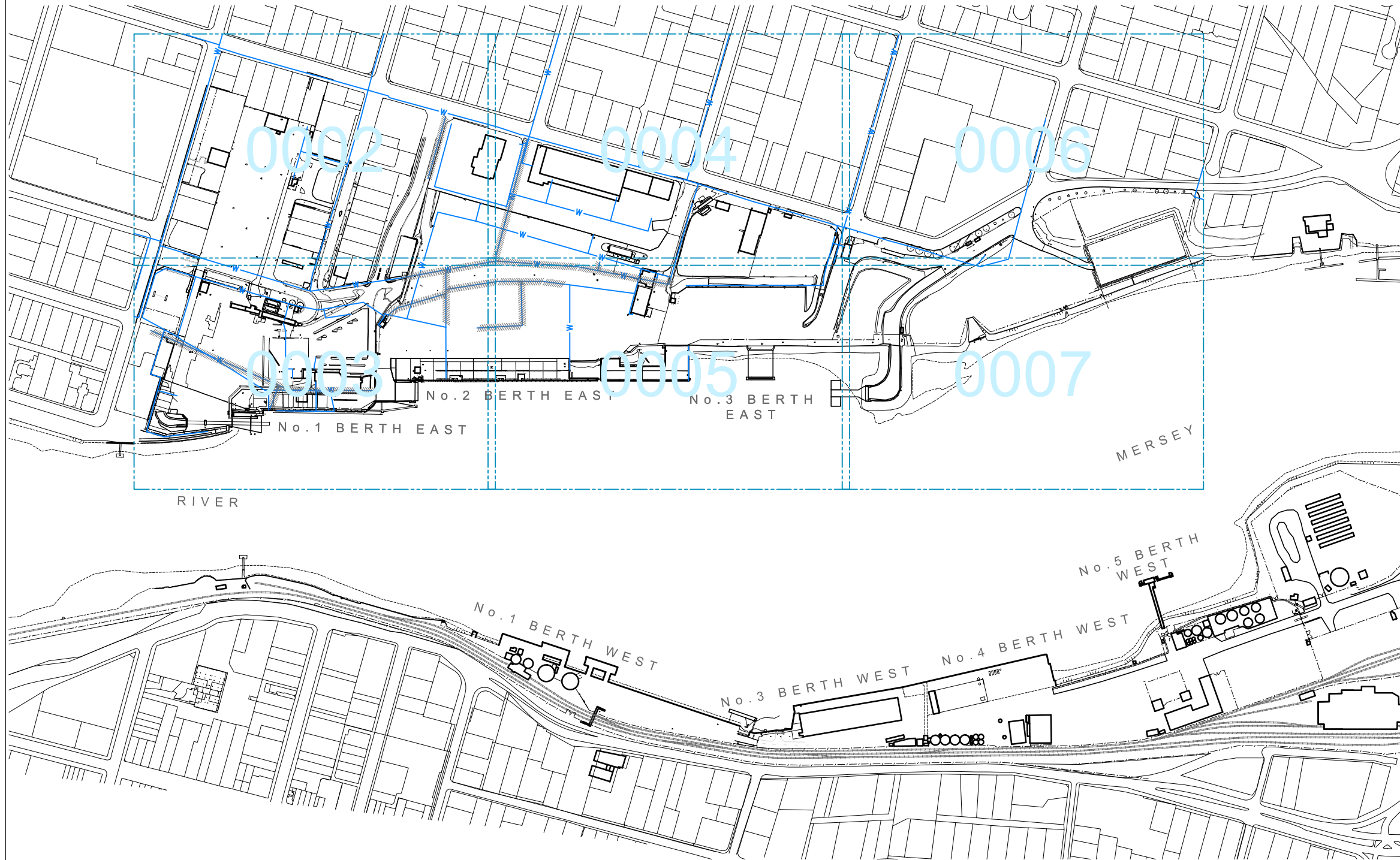
- WATER MAIN
- REDUNDANT/ INACTIVE SERVICE
- TASPORTS PROPERTY BOUNDARY

**SYMBOLS LEGEND**

	WATER METER 'X' DENOTES ID
	WATER METER IN PIT 'X' DENOTES ID
	GATE VALVE (NORMALLY OPEN) 'X' DENOTES ID
	GATE VALVE (NORMALLY CLOSED) 'X' DENOTES ID
	GATE VALVE (NORMALLY OPEN) IN CIRCULAR PIT C/W GATIC LID 'X' DENOTES ID
	NON-RETURN VALVE 'X' DENOTES ID
	RPZ VALVE
	REDUCER
	TAP
	FIRE HOSE REEL
	FIRE PLUG
	HYDRANT
	HYDRANT TWIN PILLAR
	END CAP
	ADDITIONAL NOTES STORED WITHIN CAD FILE

**ABBREVIATIONS:**

AC	ASBESTOS CEMENT
CICL	CAST IRON CEMENT LINED
Cu	COPPER
DI	DUCTILE IRON
DICL	DUCTILE IRON CEMENT LINED
DN	DIAMETER
GALV	GALVANISED
PVC-U	UNPLASTICISED POLYVINYL CHLORIDE
SV	STOP VALVE
VICT	VICTAULIC JOINT PIPE



Horizontal datum shall be to Geocentric Datum of Australia 1994 (GDA94) Zone 55.  
 All levels within TasPorts property shall be nominated relative to Chart Datum (CD), which is Lowest Astronomical Tide (LAT).  
 The Chart Datum (CD) is 1.97m below the Australian Height Datum (AHD).  
 To convert between AHD and CD a factor of 1.97 must be applied. i.e. AHD 15.268m = CD (LAT) 17.238m

REV	DESCRIPTION	DRAWN	CHECKED	APRVD	DATE
A	ISSUED FOR INFORMATION	NJE	PB	SWH	27-05-20

**INFORMATION NOT FOR CONSTRUCTION**



These designs, plans and specifications and the copyright therein are the property of Tasmanian Ports Corporation Pty Ltd and must not be used, reproduced or copied wholly or in part without the written permission of Tasmanian Ports Corporation Pty Ltd.



DRAWN	N. EBERHARDT	22-05-2020
DESIGNED		
DESIGN CHECK		
APPROVED		
SIGNED		DATE

**DEVONPORT EAST RECONFIGURATION SITE-WIDE EXISTING POTABLE WATER LOCALITY PLAN & LEGEND**

SCALE	DATUM	PAPER
1:5000	CHART (LAT)	A3
SHEET 1 OF 8		
DRAWING NUMBER	REVISION	
6A0000-2230-STW-ESC-0001	A	



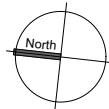
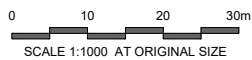
0002	0004
0003	0005

INDEX TO ADJOINING MAPS

Horizontal datum shall be to Geocentric Datum of Australia 1994 (GDA94) Zone 55.  
 All levels within TasPorts property shall be nominated relative to Chart Datum (CD), which is Lowest Astronomical Tide (LAT).  
 The Chart Datum (CD) is 1.97m below the Australian Height Datum (AHD).  
 To convert between AHD and CD a factor of 1.97 must be applied, i.e. AHD 15.268m = CD (LAT) 17.238m.

REV	DESCRIPTION	DRAWN	CHECKED	APRVD	DATE
A	ISSUED FOR INFORMATION	NJE	PB	SWH	27-05-20

**INFORMATION NOT FOR CONSTRUCTION**



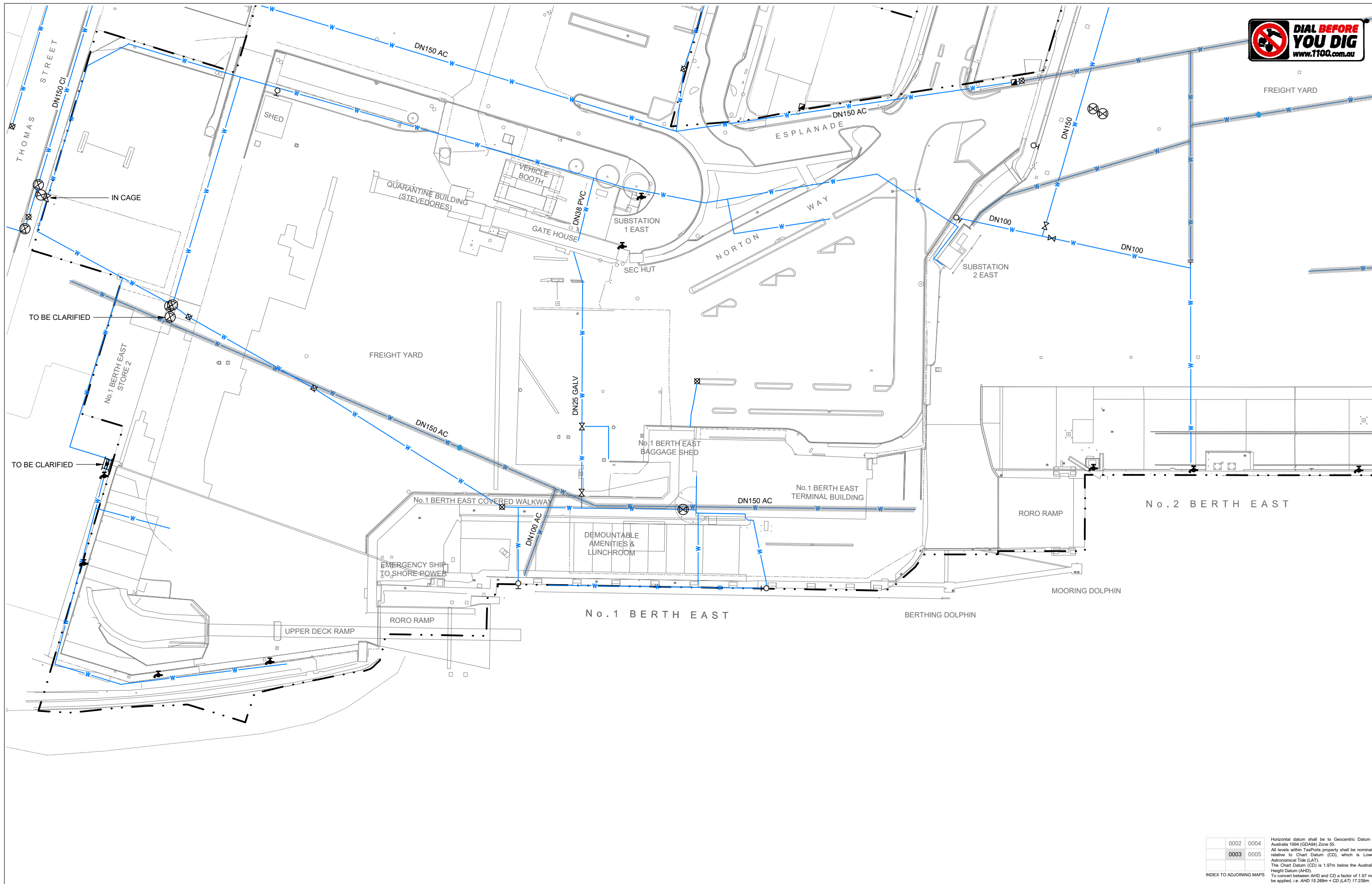
These designs, plans and specifications and the copyright therein are the property of Tasmanian Ports Corporation Pty Ltd and must not be used, reproduced or copied wholly or in part without the written permission of Tasmanian Ports Corporation Pty Ltd.



DRAWN	N. EBERHARDT	22-05-2020
DESIGNED		
DESIGN CHECK		
APPROVED		
SIGNED		DATE

**DEVONPORT EAST RECONFIGURATION  
 SITE-WIDE  
 EXISTING POTABLE WATER  
 ENLARGED PLAN**

SCALE	DATUM	PAPER
1:1000	CHART (LAT)	A3
SHEET 2 OF 8		
DRAWING NUMBER		REVISION
6A0000-2230-STW-ESC-0002		A



0002	0004	Horizontal datum shall be to Geocentric Datum of Australia 1994 (GDA94) Zone 55. All levels within TasPorts property shall be nominated relative to Chart Datum (CD), which is Lowest Astronomical Tide (LAT). The Chart Datum (CD) is 1.97m below the Australian Height Datum (AHD). To convert between AHD and CD a factor of 1.97 must be applied. i.e. AHD 15.268m = CD (LAT) 17.238m.
0003	0005	

REV	DESCRIPTION	DRAWN	CHECKED	APRVD	DATE
A	ISSUED FOR INFORMATION	NJE	PB	SWH	27-05-20

**INFORMATION NOT FOR CONSTRUCTION**

SCALE 1:1000 AT ORIGINAL SIZE

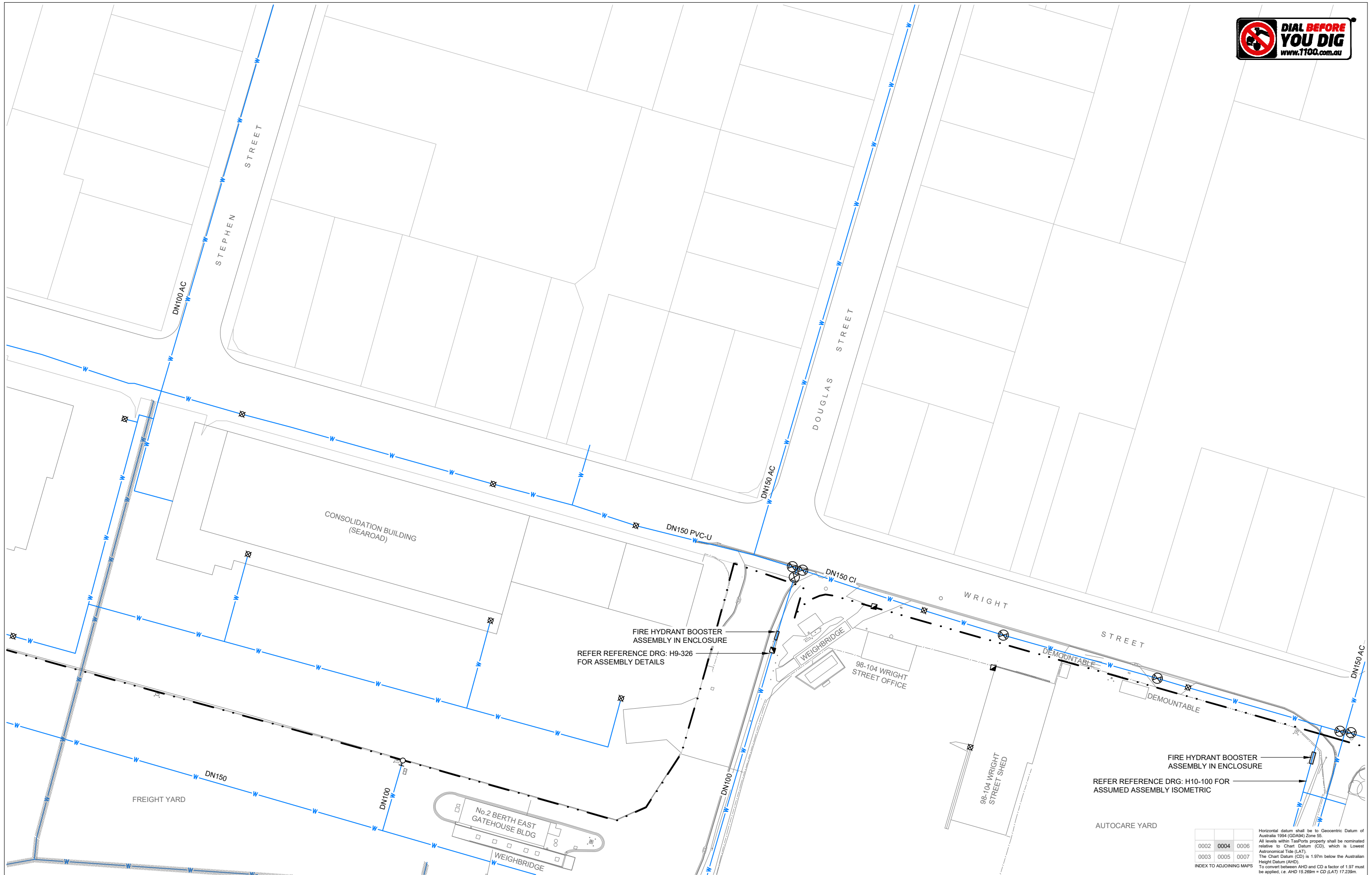
These designs, plans and specifications and the copyright therein are the property of Tasmanian Ports Corporation Pty Ltd and must not be used, reproduced or copied wholly or in part without the written permission of Tasmanian Ports Corporation Pty Ltd.



DRAWN	N. EBERHARDT	22-05-2020
DESIGNED		
DESIGN CHECK		
APPROVED		
SIGNED		DATE

**DEVONPORT EAST RECONFIGURATION  
SITE-WIDE  
EXISTING POTABLE WATER  
ENLARGED PLAN**

SCALE	DATUM	PAPER
1:1000	CHART (LAT)	A3
SHEET 3 OF 8		
DRAWING NUMBER	REVISION	
6A0000-2230-STW-ESC-0003	A	



FIRE HYDRANT BOOSTER ASSEMBLY IN ENCLOSURE  
REFER REFERENCE DRG: H9-326 FOR ASSEMBLY DETAILS

FIRE HYDRANT BOOSTER ASSEMBLY IN ENCLOSURE  
REFER REFERENCE DRG: H10-100 FOR ASSUMED ASSEMBLY ISOMETRIC

0002	0004	0006
0003	0005	0007

INDEX TO ADJOINING MAPS

Horizontal datum shall be to Geocentric Datum of Australia 1994 (GDA94) Zone 55. All levels within TasPorts property shall be nominated relative to Chart Datum (CD), which is Lowest Astronomical Tide (LAT). The Chart Datum (CD) is 1.97m below the Australian Height Datum (AHD). To convert between AHD and CD a factor of 1.97 must be applied. i.e. AHD 15.268m = CD (LAT) 17.238m

REV	DESCRIPTION	DRAWN	CHECKED	APRVD	DATE
A	ISSUED FOR INFORMATION	NJE	PB	SWH	27-05-20

**INFORMATION NOT FOR CONSTRUCTION**

SCALE 1:1000 AT ORIGINAL SIZE

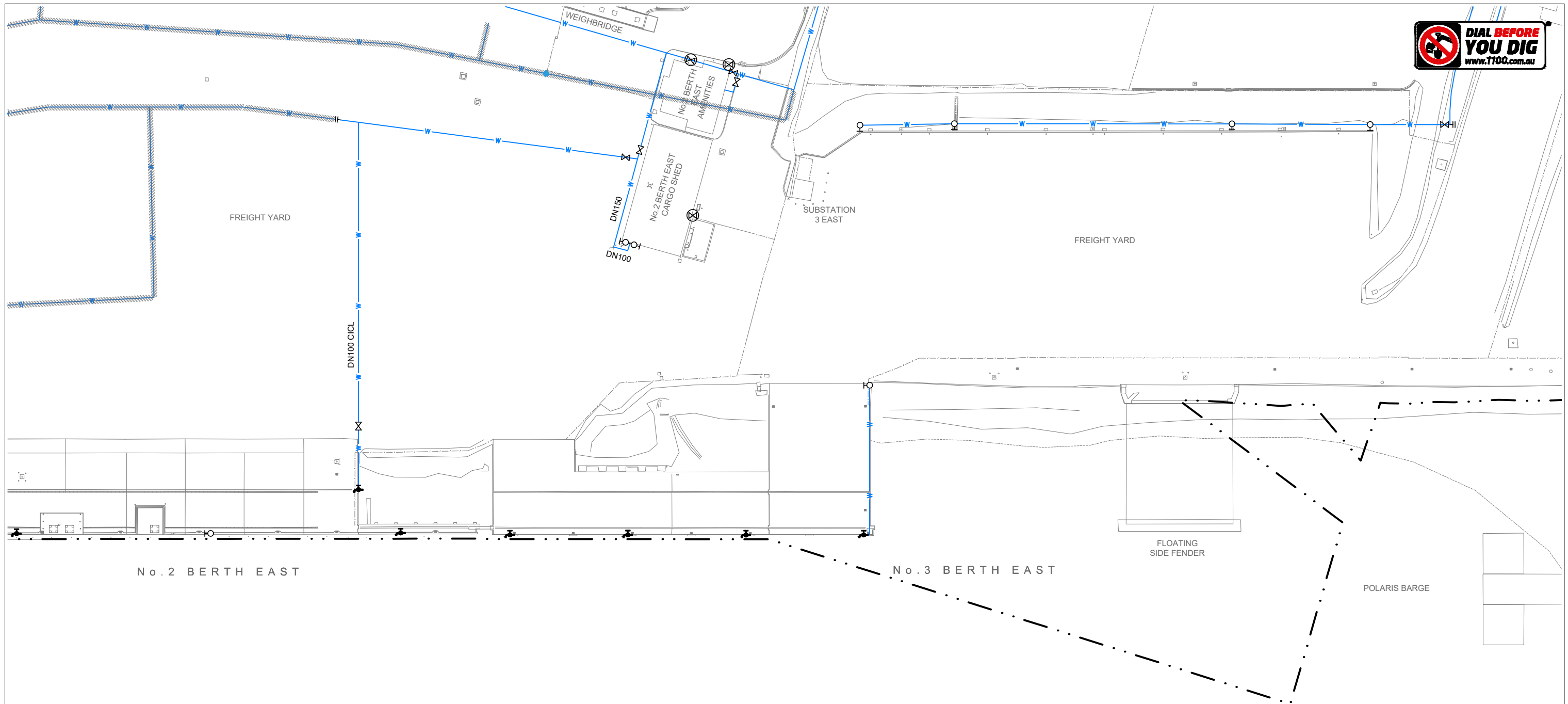
These designs, plans and specifications and the copyright therein are the property of Tasmanian Ports Corporation Pty Ltd and must not be used, reproduced or copied wholly or in part without the written permission of Tasmanian Ports Corporation Pty Ltd.



DRAWN	N. EBERHARDT	22-05-2020
DESIGNED		
DESIGN CHECK		
APPROVED		
SIGNED		DATE

**DEVONPORT EAST RECONFIGURATION SITE-WIDE EXISTING POTABLE WATER ENLARGED PLAN**

SCALE	DATUM	PAPER
1:1000	CHART (LAT)	A3
SHEET 4 OF 8		
DRAWING NUMBER	REVISION	
6A0000-2230-STW-ESC-0004	A	



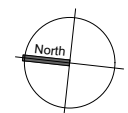
0002	0004	0006	Horizontal datum shall be to Geocentric Datum of Australia 1994 (GDA94) Zone 55. All levels within TasPorts property shall be nominated relative to Chart Datum (CD), which is Lowest Astronomical Tide (LAT). The Chart Datum (CD) is 1.97m below the Australian Height Datum (AHD). To convert between AHD and CD a factor of 1.97 must be applied. i.e. AHD 15.268m = CD (LAT) 17.238m.
0003	0005	0007	
INDEX TO ADJOINING MAPS			

A ISSUED FOR INFORMATION						NJE	PB	SWH	27-05-20
REV	DESCRIPTION	DRAWN	CHECKED	APRVD	DATE				

**INFORMATION NOT FOR CONSTRUCTION**

0 10 20 30m

SCALE 1:1000 AT ORIGINAL SIZE



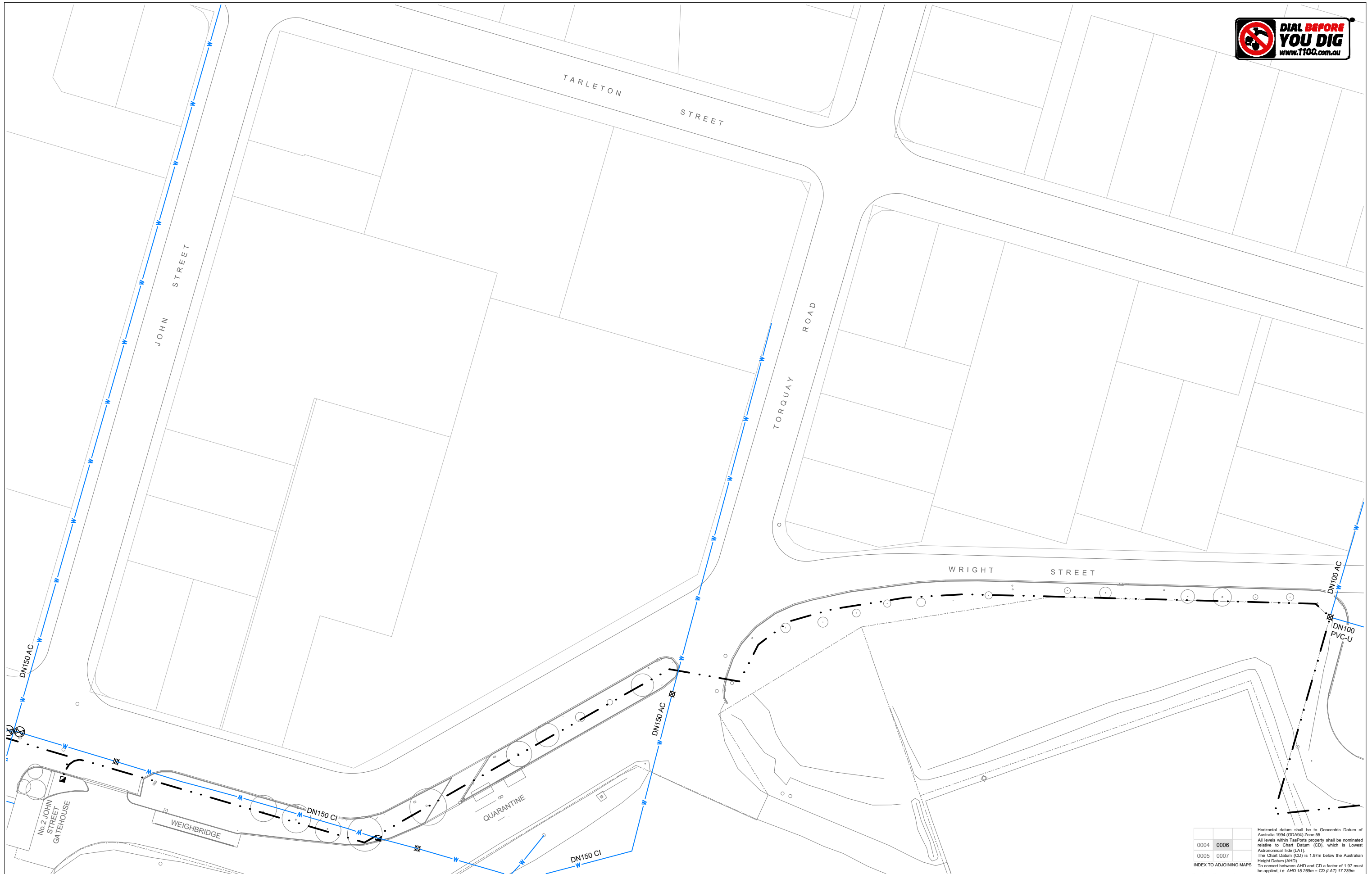
These designs, plans and specifications and the copyright therein are the property of Tasmanian Ports Corporation Pty Ltd and must not be used, reproduced or copied wholly or in part without the written permission of Tasmanian Ports Corporation Pty Ltd.



DRAWN	N. EBERHARDT	22-05-2020
DESIGNED		
DESIGN CHECK		
APPROVED		
SIGNED		DATE

**DEVONPORT EAST RECONFIGURATION**  
**SITE-WIDE**  
**EXISTING POTABLE WATER**  
**ENLARGED PLAN**

SCALE	DATUM	PAPER
1:1000	CHART (LAT)	A3
SHEET 5 OF 8		
DRAWING NUMBER	REVISION	
6A0000-2230-STW-ESC-0005	A	



Horizontal datum shall be to Geocentric Datum of Australia 1994 (GDA94) Zone 55.  
 All levels within TasPorts property shall be nominated relative to Chart Datum (CD), which is Lowest Astronomical Tide (LAT).  
 The Chart Datum (CD) is 1.97m below the Australian Height Datum (AHD).  
 To convert between AHD and CD a factor of 1.97 must be applied. i.e. AHD 15.268m = CD (LAT) 17.238m.

REV	DESCRIPTION	DRAWN	CHECKED	APRVD	DATE
A	ISSUED FOR INFORMATION	NJE	PB	SWH	27-05-20

**INFORMATION  
NOT FOR CONSTRUCTION**



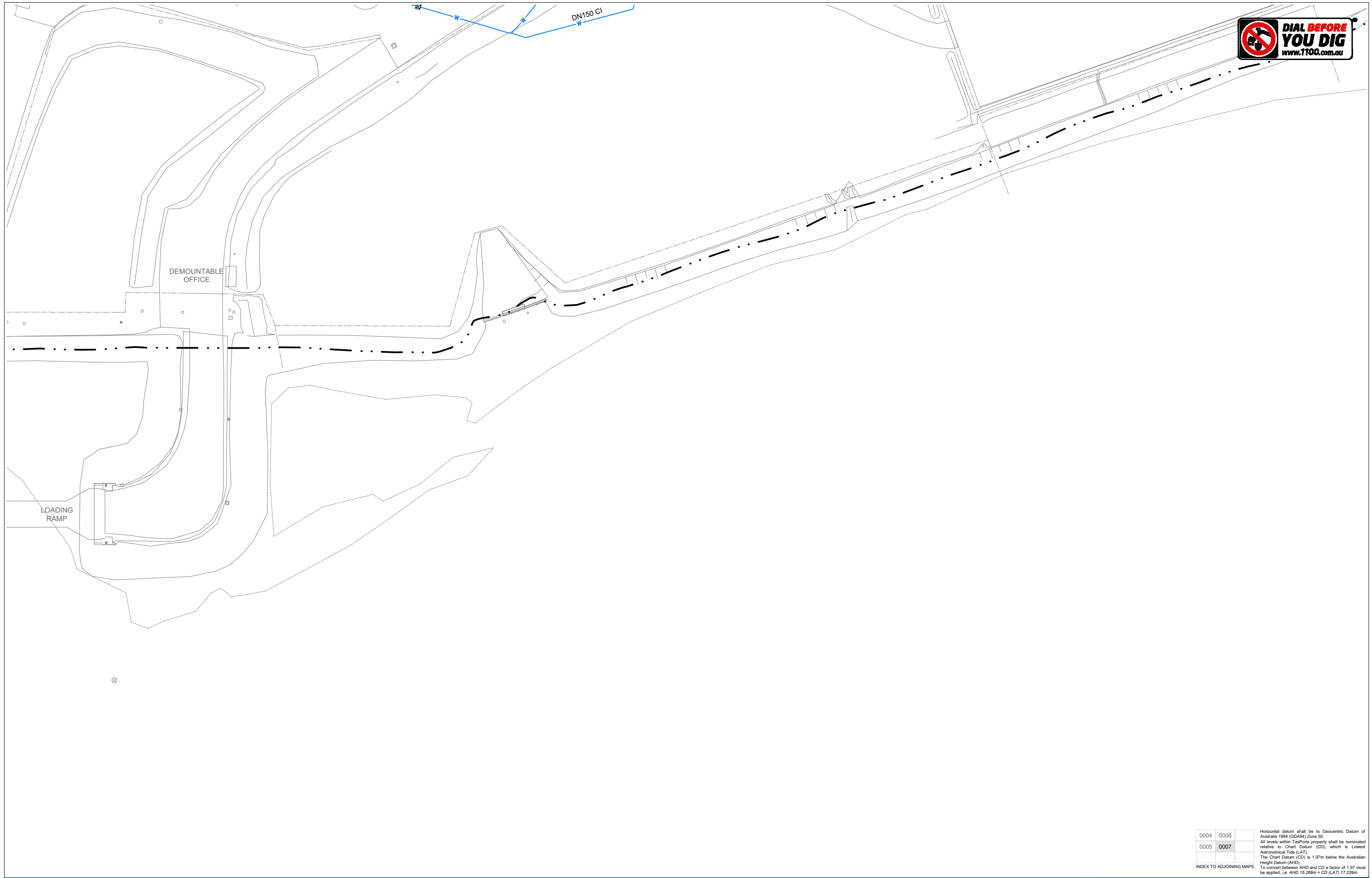
These designs, plans and specifications and the copyright therein are the property of Tasmanian Ports Corporation Pty Ltd and must not be used, reproduced or copied wholly or in part without the written permission of Tasmanian Ports Corporation Pty Ltd.



DRAWN	N. EBERHARDT	22-05-2020
DESIGNED		
DESIGN CHECK		
APPROVED		
SIGNED		DATE

**DEVONPORT EAST RECONFIGURATION  
SITE-WIDE  
EXISTING POTABLE WATER  
ENLARGED PLAN**

SCALE	DATUM	PAPER
1:1000	CHART (LAT)	A3
SHEET 6 OF 8		
DRAWING NUMBER	REVISION	
6A0000-2230-STW-ESC-0006	A	



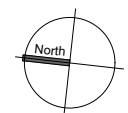
0004	0006	
0005	0007	

Horizontal datum shall be to Geocentric Datum of Australia 1994 (GDA94) Zone 55.  
 All levels within TasPorts property shall be nominated relative to Chart Datum (CD), which is Lowest Astronomical Tide (LAT).  
 The Chart Datum (CD) is 1.97m below the Australian Height Datum (AHD).  
 To convert between AHD and CD a factor of 1.97 must be applied. i.e. AHD 15.268m = CD (LAT) 17.238m.

A ISSUED FOR INFORMATION		NJE	PB	SWH	27-05-20
REV	DESCRIPTION	DRAWN	CHECKED	APRVD	DATE

**INFORMATION  
NOT FOR CONSTRUCTION**

SCALE 1:1000 AT ORIGINAL SIZE



These designs, plans and specifications and the copyright therein are the property of Tasmanian Ports Corporation Pty Ltd and must not be used, reproduced or copied wholly or in part without the written permission of Tasmanian Ports Corporation Pty Ltd.



DRAWN	N.EBERHARDT	22-05-2020
DESIGNED		
DESIGN CHECK		
APPROVED		
SIGNED		DATE

**DEVONPORT EAST RECONFIGURATION  
SITE-WIDE  
EXISTING POTABLE WATER  
ENLARGED PLAN**

SCALE	DATUM	PAPER
1:1000	CHART (LAT)	A3
SHEET 7 OF 8		
DRAWING NUMBER	REVISION	
6A0000-2230-STW-ESC-0007	A	

Drawing No.	Title	Date
<b>Reference Drawing Set</b>		
Archive Drawings		
H-9-42	Marine Board of Devonport; No.2 Berth East; Services; Electrical - Water - Telephone	01-10-1969
H-9-326	Holyman Transport Devonport; Fire Protection Services; Site Plan	22-06-2002
H-9-345 (sh 1)	Holyman Shipping Devonport; TT line Access Road; Services Plan	26-11-2001
H-9-346 (sh 1)	Holyman Shipping Devonport; Coastal Terminal; Fire Protection Services; Drg Index, Legend of Symbols, General Notes & Details	21-12-2001
H-9-346 (sh 2)	Holyman Shipping Devonport; Coastal Terminal; Fire Protection Services; Site Plan; Demolition Works	21-12-2001
H-9-346 (sh 3)	Holyman Shipping Devonport; Coastal Terminal; Fire Protection Services; Site plan; Proposed Hydrant Layout	21-12-2001
H-9-886-18	John Holland Construction Group; No.2 Berth East; Layout of Services and Details	21-05-1969
H-10-100	Port of Devonport Authority; Coastal express line; 2-3 East berth Development; Kerb & Channel Relocations	18-01-1996
L-14-013	Marine Board of Devonport; Ferry Terminal; Services Layout	21-07-1959
L-14-100	Marine Board of Devonport; Bass Strait Ferry Terminal; Sewer & Water Services	08-12-1970
L-14-150	Marine Board of Devonport; No.1 Berth East; Services and Electrical Layout	09-04-1975
L-14-332	Chester G Bullock and Associates; Devonport Terminal Re-Development for TT-Line; First Floor Fire Protection Services	n/a
L-14-360c	Pitt & Sherry; TT-Line Vehicle Marshalling and Freight Yard Redevelopment (4 Sheets)	28-08-2003

**NOTES:**

1. THE REFERENCE DRAWINGS LISTED ARE FOR INFORMATION ONLY. ADDITIONAL WORKS AND OR CHANGES TO THE DESIGNS ARE POSSIBLE, DOCUMENTS HAVE BEEN UNCONTROLLED FROM ISSUE DATE.
2. IF DISCREPANCIES BETWEEN REFERENCE DRAWINGS (LISTED ABOVE) AND THIS DRAWING SET ARE IDENTIFIED PLEASE NOTIFY TASPORTS REPRESENTATIVE FOR CLARIFICATION.

Horizontal datum shall be to Geocentric Datum of Australia 1994 (GDA94) Zone 55. All levels within TasPorts property shall be nominated relative to Chart Datum (CD), which is Lowest Astronomical Tide (LAT). The Chart Datum (CD) is 1.97m below the Australian Height Datum (AHD). To convert between AHD and CD a factor of 1.97 must be applied. i.e. AHD 15.268m = CD (LAT) 17.238m.

REV	DESCRIPTION	DRAWN	CHECKED	APRVD	DATE
A	ISSUED FOR INFORMATION	NJE	PB	SWH	27-05-20

**INFORMATION**  
NOT FOR CONSTRUCTION

These designs, plans and specifications and the copyright therein are the property of Tasmanian Ports Corporation Pty Ltd and must not be used, reproduced or copied wholly or in part without the written permission of Tasmanian Ports Corporation Pty Ltd.



DRAWN	N.EBERHARDT	22-05-2020
DESIGNED		
DESIGN CHECK		
APPROVED		
	SIGNED	DATE

**DEVONPORT EAST RECONFIGURATION**  
**SITE-WIDE**  
**EXISTING POTABLE WATER**  
**REFERENCE DRAWING SCHEDULE**

SCALE	DATUM	PAPER
		<b>A3</b>
SHEET <b>8</b> OF <b>8</b>		
DRAWING NUMBER	REVISION	
<b>6A0000-2230-STW-ESC-0008</b>	<b>A</b>	