

NOTES:

- THE FOLLOWING DRAWINGS ARE DERIVED FROM:
 - REFERENCE DRAWINGS AS LISTED ON DRG: 6A0000-2240-STW-ESC-0008
 - PDA DETAIL SURVEYS:
 - 44135 27-06-2019
 - 44480 13-09-2019
 - DIAL BEFORE YOU DIG
- UNLESS NOTED OTHERWISE THE LOCATION AND DEPTH OF UNDERGROUND SERVICES SHOWN ARE APPROXIMATE ONLY AND THE EXACT LOCATION, DEPTH AND EXTENT OF SERVICES SHALL BE VERIFIED WITH THE APPROPRIATE AUTHORITY, LOCATED, MARKED AND PROTECTED AS REQUIRED.
- THE APPROPRIATE DUTY OF CARE RESPONSIBILITIES AND OPERATIONAL PROTOCOLS ESTABLISHED BY THE RELEVANT AUTHORITIES SHALL BE ADHERED TO. THIS INCLUDES RESTRICTIONS TO EXCAVATION AND OTHER CONSTRUCTION ACTIVITY IN CLOSE PROXIMITY TO EXISTING SERVICES, INFRASTRUCTURE AND OPERATIONAL CONSTRAINTS.
- THE FOLLOWING DRAWING SET MUST ONLY BE DISTRIBUTED IN FULL COLOUR. TASPORTS ACCEPTS NO LIABILITY ARISING FROM FAILURE TO COMPLY WITH THIS REQUIREMENT.

LINETYPE LEGEND:

- SEWER MAIN
- SEWER RISING MAIN '>' INDICATES DIRECT OF FLOW
- SEWER PROPERTY CONNECTION (INDICATIVE)
- REDUNDANT/ INACTIVE SERVICE
- TASPORTS PROPERTY BOUNDARY

SYMBOLS LEGEND

y	SEWER PIT
'y'	'y' DENOTES TYPE
MH	MH - MANHOLE
PP	PP - PUMP PIT
'x'	'x' DENOTES ID
◆	ADDITIONAL NOTES STORED WITHIN CAD FILE

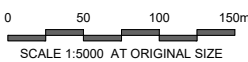
ABBREVIATIONS:

AC	ASBESTOS CEMENT
CO	CONCRETE
DCC	DEVONPORT CITY COUNCIL
DN	DIAMETER
MH	MANHOLE
PE	POLYETHYLENE
PP	PUMP PIT
PS	PUMP STATION
PVC-U	UNPLASTICISED POLYVINYL CHLORIDE
RC	REINFORCED CONCRETE
VC	VITRIFIED CLAY

Horizontal datum shall be to Geocentric Datum of Australia 1994 (GDA94) Zone 55.
 All levels within TasPorts property shall be nominated relative to Chart Datum (CD), which is Lowest Astronomical Tide (LAT).
 The Chart Datum (CD) is 1.97m below the Australian Height Datum (AHD).
 To convert between AHD and CD a factor of 1.97 must be applied. i.e. AHD 15.269m = CD (LAT) 17.239m.

A ISSUED FOR INFORMATION		NJE	PB	SWH	27-05-20
REV	DESCRIPTION	DRAWN	CHECKED	APRVD	DATE

INFORMATION NOT FOR CONSTRUCTION



These designs, plans and specifications and the copyright therein are the property of Tasmanian Ports Corporation Pty Ltd and must not be used, reproduced or copied wholly or in part without the written permission of Tasmanian Ports Corporation Pty Ltd.



DRAWN	N.EBERHARDT	22-05-2020
DESIGNED		
DESIGN CHECK		
APPROVED		
SIGNED		DATE

DEVONPORT EAST RECONFIGURATION SITE-WIDE EXISTING SEWER LOCALITY PLAN & LEGEND

SCALE	DATUM	PAPER
1:5000	CHART (LAT)	A3
SHEET 1 OF 8		
DRAWING NUMBER	REVISION	
6A0000-2240-STW-ESC-0001	A	



ASSUMED UNDER PAVEMENT
REFER DRG: P156-D2.1-18
(H9-347)

0002	0004
0003	0005

INDEX TO ADJOINING MAPS

Horizontal datum shall be to Geocentric Datum of Australia 1994 (GDA94) Zone 55.
All levels within TasPorts property shall be nominated relative to Chart Datum (CD), which is Lowest Astronomical Tide (LAT).
The Chart Datum (CD) is 1.97m below the Australian Height Datum (AHD).
To convert between AHD and CD a factor of 1.97 must be applied. i.e. AHD 15.268m = CD (LAT) 17.238m

A ISSUED FOR INFORMATION		NJE	PB	SWH	27-05-20
REV	DESCRIPTION	DRAWN	CHECKED	APRVD	DATE

INFORMATION NOT FOR CONSTRUCTION

SCALE 1:1000 AT ORIGINAL SIZE

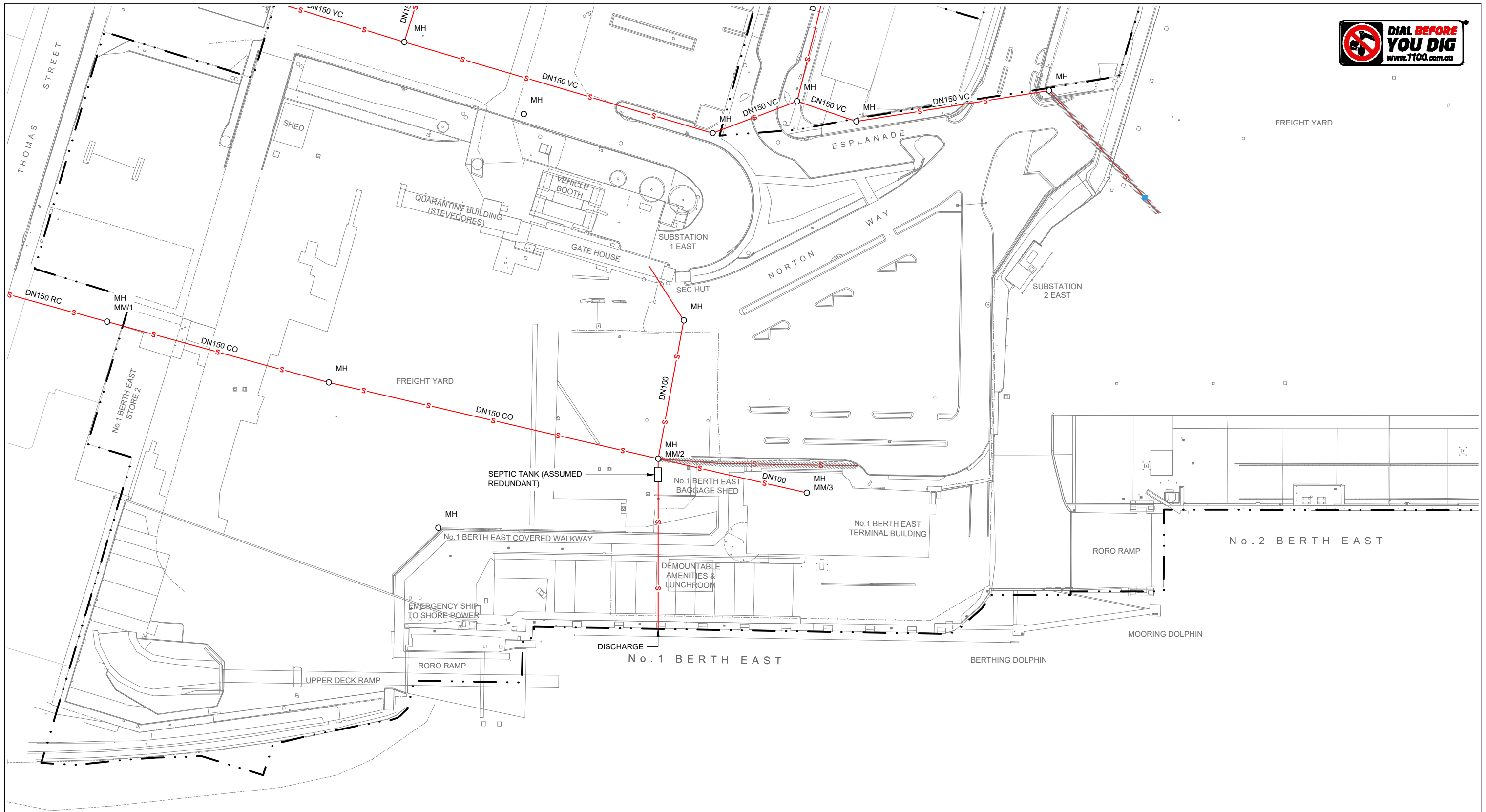
These designs, plans and specifications and the copyright therein are the property of Tasmanian Ports Corporation Pty Ltd and must not be used, reproduced or copied wholly or in part without the written permission of Tasmanian Ports Corporation Pty Ltd.



DRAWN	N. EBERHARDT	22-05-2020
DESIGNED		
DESIGN CHECK		
APPROVED		
SIGNED		DATE

**DEVONPORT EAST RECONFIGURATION
SITE-WIDE
EXISTING SEWER
ENLARGED PLAN**

SCALE	DATUM	PAPER
1:1000	CHART (LAT)	A3
SHEET 2 OF 8		REVISION
DRAWING NUMBER		
6A0000-2240-STW-ESC-0002		A



0002	0004	Horizontal datum shall be to Geocentric Datum of Australia 1994 (GDA94) Zone 55. All levels within TasPorts property shall be nominated relative to Chart Datum (CD), which is Lowest Astronomical Tide (LAT). The Chart Datum (CD) is 1.97m below the Australian Height Datum (AHD). To convert between AHD and CD a factor of 1.97 must be applied. i.e. AHD 15.268m = CD (LAT) 17.238m.
0003	0005	

A ISSUED FOR INFORMATION		NJE	PB	SWH	27-05-20
REV	DESCRIPTION	DRAWN	CHECKED	APRVD	DATE

INFORMATION NOT FOR CONSTRUCTION

SCALE 1:1000 AT ORIGINAL SIZE

These designs, plans and specifications and the copyright therein are the property of Tasmanian Ports Corporation Pty Ltd and must not be used, reproduced or copied wholly or in part without the written permission of Tasmanian Ports Corporation Pty Ltd.



DRAWN	N. EBERHARDT	22-05-2020
DESIGNED		
DESIGN CHECK		
APPROVED		
SIGNED		DATE

**DEVONPORT EAST RECONFIGURATION
SITE-WIDE
EXISTING SEWER
ENLARGED PLAN**

SCALE	DATUM	PAPER
1:1000	CHART (LAT)	A3
SHEET 3 OF 8		
DRAWING NUMBER	REVISION	
6A0000-2240-STW-ESC-0003	A	



Horizontal datum shall be to Geocentric Datum of Australia 1994 (GDA94) Zone 55.
 All levels within TasPorts property shall be nominated relative to Chart Datum (CD), which is Lowest Astronomical Tide (LAT).
 The Chart Datum (CD) is 1.97m below the Australian Height Datum (AHD).
 To convert between AHD and CD a factor of 1.97 must be applied. i.e. AHD 15.268m = CD (LAT) 17.238m

0002	0004	0006
0003	0005	0007

INDEX TO ADJOINING MAPS

A ISSUED FOR INFORMATION		NJE	PB	SWH	27-05-20
REV	DESCRIPTION	DRAWN	CHECKED	APRVD	DATE

INFORMATION NOT FOR CONSTRUCTION

SCALE 1:1000 AT ORIGINAL SIZE

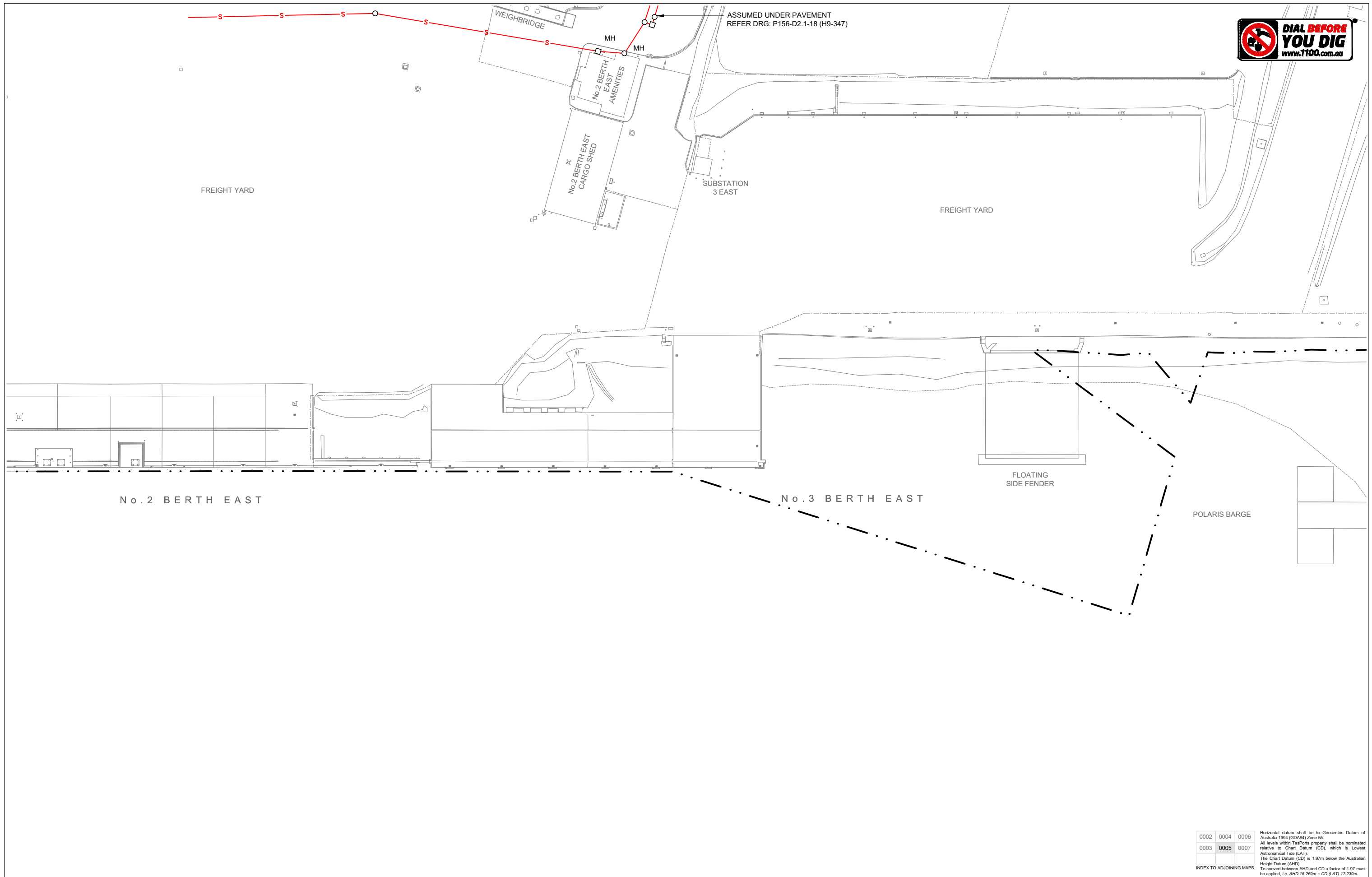
These designs, plans and specifications and the copyright therein are the property of Tasmanian Ports Corporation Pty Ltd and must not be used, reproduced or copied wholly or in part without the written permission of Tasmanian Ports Corporation Pty Ltd.



DRAWN	N. EBERHARDT	22-05-2020
DESIGNED		
DESIGN CHECK		
APPROVED		
SIGNED		DATE

DEVONPORT EAST RECONFIGURATION SITE-WIDE EXISTING SEWER ENLARGED PLAN

SCALE	DATUM	PAPER
1:1000	CHART (LAT)	A3
SHEET 4 OF 8		
DRAWING NUMBER	REVISION	
6A0000-2240-STW-ESC-0004	A	



ASSUMED UNDER PAVEMENT
REFER DRG: P156-D2.1-18 (H9-347)

No. 2 BERTH EAST

No. 3 BERTH EAST

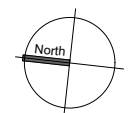
POLARIS BARGE

FLOATING
SIDE FENDER

0002	0004	0006	Horizontal datum shall be to Geocentric Datum of Australia 1994 (GDA94) Zone 55. All levels within TasPorts property shall be nominated relative to Chart Datum (CD), which is Lowest Astronomical Tide (LAT). The Chart Datum (CD) is 1.97m below the Australian Height Datum (AHD). To convert between AHD and CD a factor of 1.97 must be applied. i.e. AHD 15.268m = CD (LAT) 17.238m.
0003	0005	0007	
INDEX TO ADJOINING MAPS			

A ISSUED FOR INFORMATION						NJE	PB	SWH	27-05-20
REV	DESCRIPTION	DRAWN	CHECKED	APRVD	DATE				

**INFORMATION
NOT FOR CONSTRUCTION**



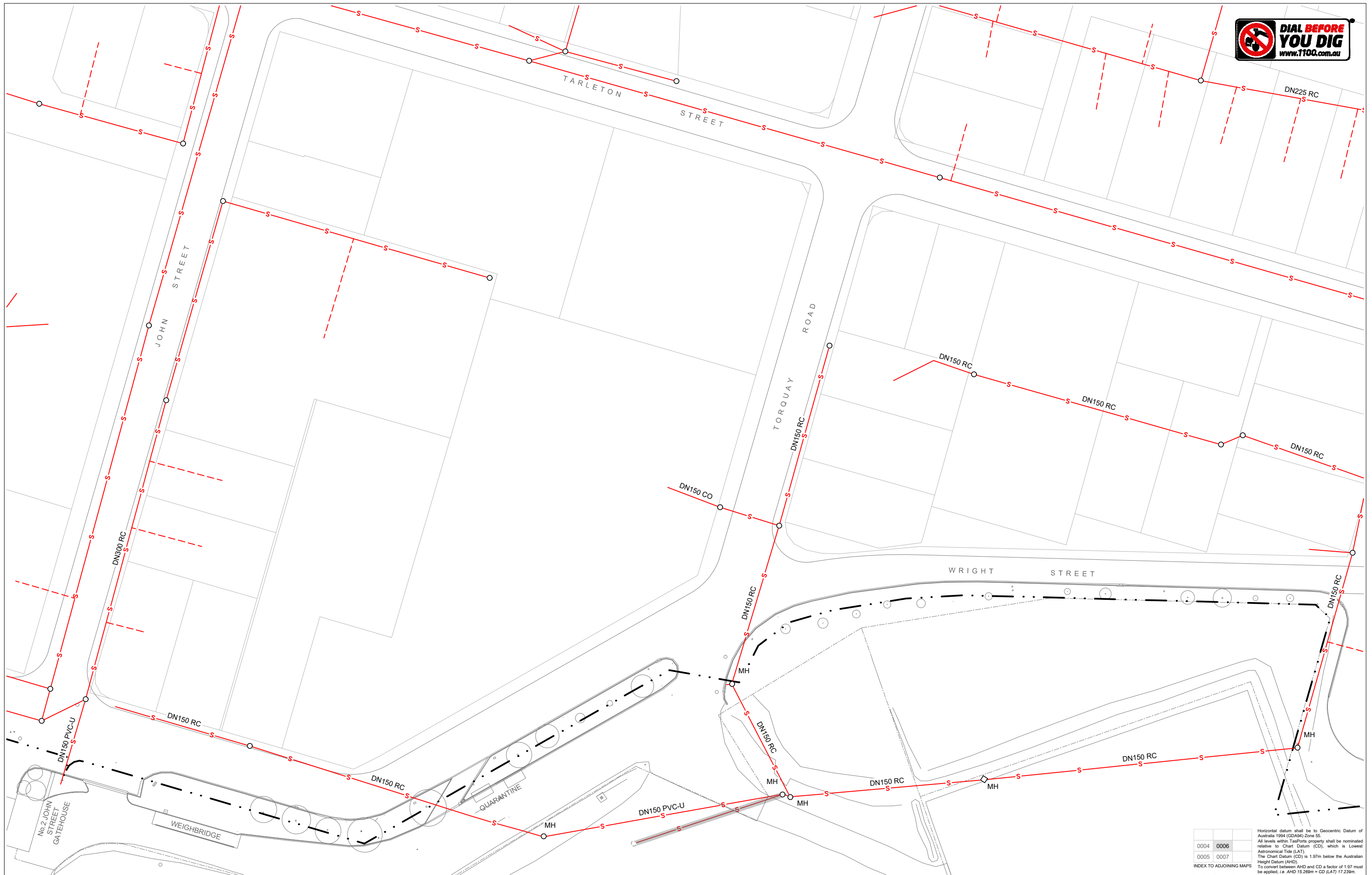
These designs, plans and specifications and the copyright therein are the property of Tasmanian Ports Corporation Pty Ltd and must not be used, reproduced or copied wholly or in part without the written permission of Tasmanian Ports Corporation Pty Ltd.



DRAWN	N. EBERHARDT	22-05-2020
DESIGNED		
DESIGN CHECK		
APPROVED		
SIGNED		DATE

**DEVONPORT EAST RECONFIGURATION
SITE-WIDE
EXISTING SEWER
ENLARGED PLAN**

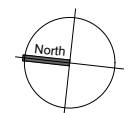
SCALE	DATUM	PAPER
1:1000	CHART (LAT)	A3
SHEET 5 OF 8		
DRAWING NUMBER	REVISION	
6A0000-2240-STW-ESC-0005	A	



Horizontal datum shall be to Geocentric Datum of Australia 1994 (GDA94) Zone 55.
 All levels within TasPorts property shall be nominated relative to Chart Datum (CD), which is Lowest Astronomical Tide (LAT).
 The Chart Datum (CD) is 1.97m below the Australian Height Datum (AHD).
 To convert between AHD and CD a factor of 1.97 must be applied. i.e. AHD 15.268m = CD (LAT) 17.238m.

REV	DESCRIPTION	DRAWN	CHECKED	APRVD	DATE
A	ISSUED FOR INFORMATION	NJE	PB	SWH	27-05-20

INFORMATION NOT FOR CONSTRUCTION



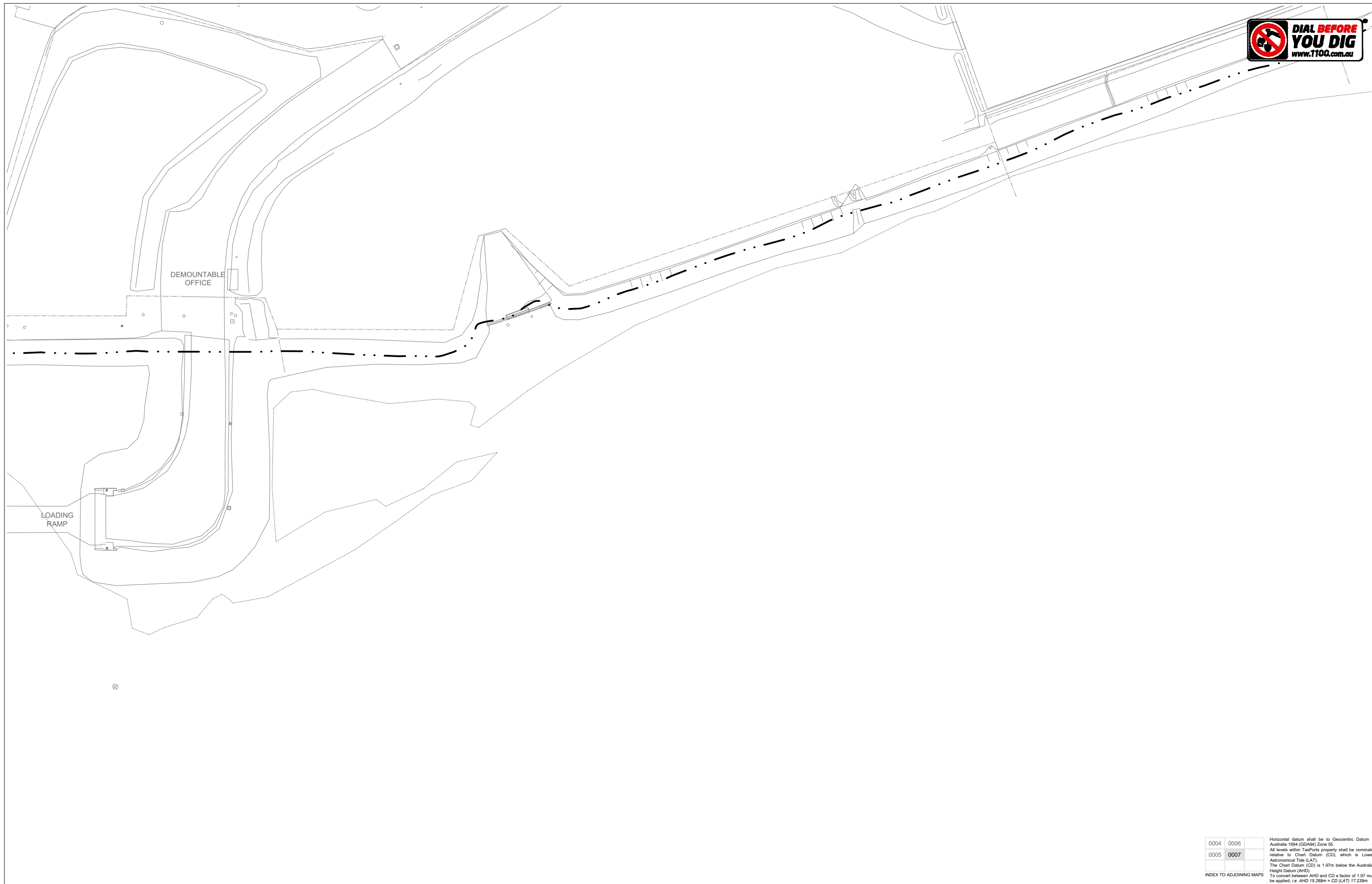
These designs, plans and specifications and the copyright therein are the property of Tasmanian Ports Corporation Pty Ltd and must not be used, reproduced or copied wholly or in part without the written permission of Tasmanian Ports Corporation Pty Ltd.



DRAWN	N. EBERHARDT	22-05-2020
DESIGNED		
DESIGN CHECK		
APPROVED		
SIGNED		DATE

**DEVONPORT EAST RECONFIGURATION
 SITE-WIDE
 EXISTING SEWER
 ENLARGED PLAN**

SCALE	DATUM	PAPER
1:1000	CHART (LAT)	A3
SHEET 6 OF 8		
DRAWING NUMBER	REVISION	
6A0000-2240-STW-ESC-0006	A	



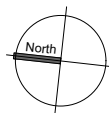
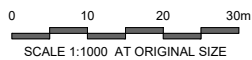
0004	0006	
0005	0007	

Horizontal datum shall be to Geocentric Datum of Australia 1994 (GDA94) Zone 55.
 All levels within TasPorts property shall be nominated relative to Chart Datum (CD), which is Lowest Astronomical Tide (LAT).
 The Chart Datum (CD) is 1.97m below the Australian Height Datum (AHD).
 To convert between AHD and CD a factor of 1.97 must be applied. i.e. AHD 15.268m = CD (LAT) 17.238m.

INDEX TO ADJOINING MAPS

A ISSUED FOR INFORMATION		NJE	PB	SWH	27-05-20
REV	DESCRIPTION	DRAWN	CHECKED	APRVD	DATE

**INFORMATION
NOT FOR CONSTRUCTION**



These designs, plans and specifications and the copyright therein are the property of Tasmanian Ports Corporation Pty Ltd and must not be used, reproduced or copied wholly or in part without the written permission of Tasmanian Ports Corporation Pty Ltd.



DRAWN	N.EBERHARDT	22-05-2020
DESIGNED		
DESIGN CHECK		
APPROVED		
SIGNED		DATE

**DEVONPORT EAST RECONFIGURATION
SITE-WIDE
EXISTING SEWER
ENLARGED PLAN**

SCALE	DATUM	PAPER
1:1000	CHART (LAT)	A3
SHEET 7 OF 8		
DRAWING NUMBER	REVISION	
6A0000-2240-STW-ESC-0007	A	

Drawing No.	Title	Date
Reference Drawing Set		
Archive Drawings		
H-9-71	Marine Board of Devonport; No.2 Berth East; Amenities Block; Septic Tank	03-03-1970
H-9-72	Marine Board of Devonport; No.2 Berth East; Amenities Garage; Washdown & Fueling Area Details	01-01-1970
H-9-295	Port of Devonport Authority; No.2 Berth East; Rising Sewer Main; ANL Gatehouse to Council Main	24-09-1990
H-9-347 (sh 14)	Holyman Transport Devonport; Civil Works; Environmental Protection Details	23-04-2002
H-9-347 (sh 15)	Holyman Transport Devonport; Civil Works; Construction Notes; Splitter Pit Details	23-04-2002
H-9-347 (sh 16)	Holyman Transport Devonport; Civil Works; Construction Notes; Pump Pit Details	23-04-2002
H-9-347 (sh 17)	Holyman Transport Devonport; Civil Works; Construction Notes; Collection Pit Details	23-04-2002
H-9-347 (sh 18)	Holyman Transport Devonport; Civil Works; Sewer Layout	08-04-2002
H-10-56	Port of Devonport Authority; No.3 East; Washdown & Refueling Bay Sheet 1	05-08-1991
H-10-57	Port of Devonport Authority; No.3 East; Washdown & Refueling Bay Sheet 2	05-08-1991
L-14-100	Marine Board of Devonport; BSFT; Sewer and Water Services	08-12-1970
L-14-108	Marine Board of Devonport; BSFT Garage; Grease Interceptor Pit & New Concrete Ground Slab	29-04-1997
L-14-254	Bush Parkes Shugg & Moon Pty Ltd; Redevelopment Ferry Terminal Building; Drainage Plan	01-01-1985
L-14-324	ARTAS; TT Line Terminal Redevelopment; East Devonport; Ground Floor; Sanitary Drainage	29-11-1993
L-14-325	ARTAS; TT Line Terminal Redevelopment; East Devonport; First Floor; Sanitary Drainage	29-11-1993
L-16-06	Devonport Municipal Council; Plan of Drainage for Marine Board of Devonport	07-08-1959

NOTES:

1. THE REFERENCE DRAWINGS LISTED ARE FOR INFORMATION ONLY. ADDITIONAL WORKS AND OR CHANGES TO THE DESIGNS ARE POSSIBLE, DOCUMENTS HAVE BEEN UNCONTROLLED FROM ISSUE DATE.
2. IF DISCREPANCIES BETWEEN REFERENCE DRAWINGS (LISTED ABOVE) AND THIS DRAWING SET ARE IDENTIFIED PLEASE NOTIFY TASPORTS REPRESENTATIVE FOR CLARIFICATION.

Horizontal datum shall be to Geocentric Datum of Australia 1994 (GDA94) Zone 55. All levels within TasPorts property shall be nominated relative to Chart Datum (CD), which is Lowest Astronomical Tide (LAT). The Chart Datum (CD) is 1.97m below the Australian Height Datum (AHD). To convert between AHD and CD a factor of 1.97 must be applied. i.e. AHD 15.268m = CD (LAT) 17.238m.

ISSUED FOR INFORMATION					
REV	DESCRIPTION	DRAWN	CHECKED	APRVD	DATE
A	ISSUED FOR INFORMATION	NJE	PB	SWH	27-05-20

**INFORMATION
NOT FOR CONSTRUCTION**

These designs, plans and specifications and the copyright therein are the property of Tasmanian Ports Corporation Pty Ltd and must not be used, reproduced or copied wholly or in part without the written permission of Tasmanian Ports Corporation Pty Ltd.



DRAWN	N.EBERHARDT	22-05-2020
DESIGNED		
DESIGN CHECK		
APPROVED		
	SIGNED	DATE

**DEVONPORT EAST RECONFIGURATION
SITE-WIDE
EXISTING SEWER
REFERENCE DRAWING SCHEDULE**

SCALE	DATUM	PAPER
		A3
SHEET 8 OF 8		
DRAWING NUMBER	REVISION	
6A0000-2240-STW-ESC-0008	A	