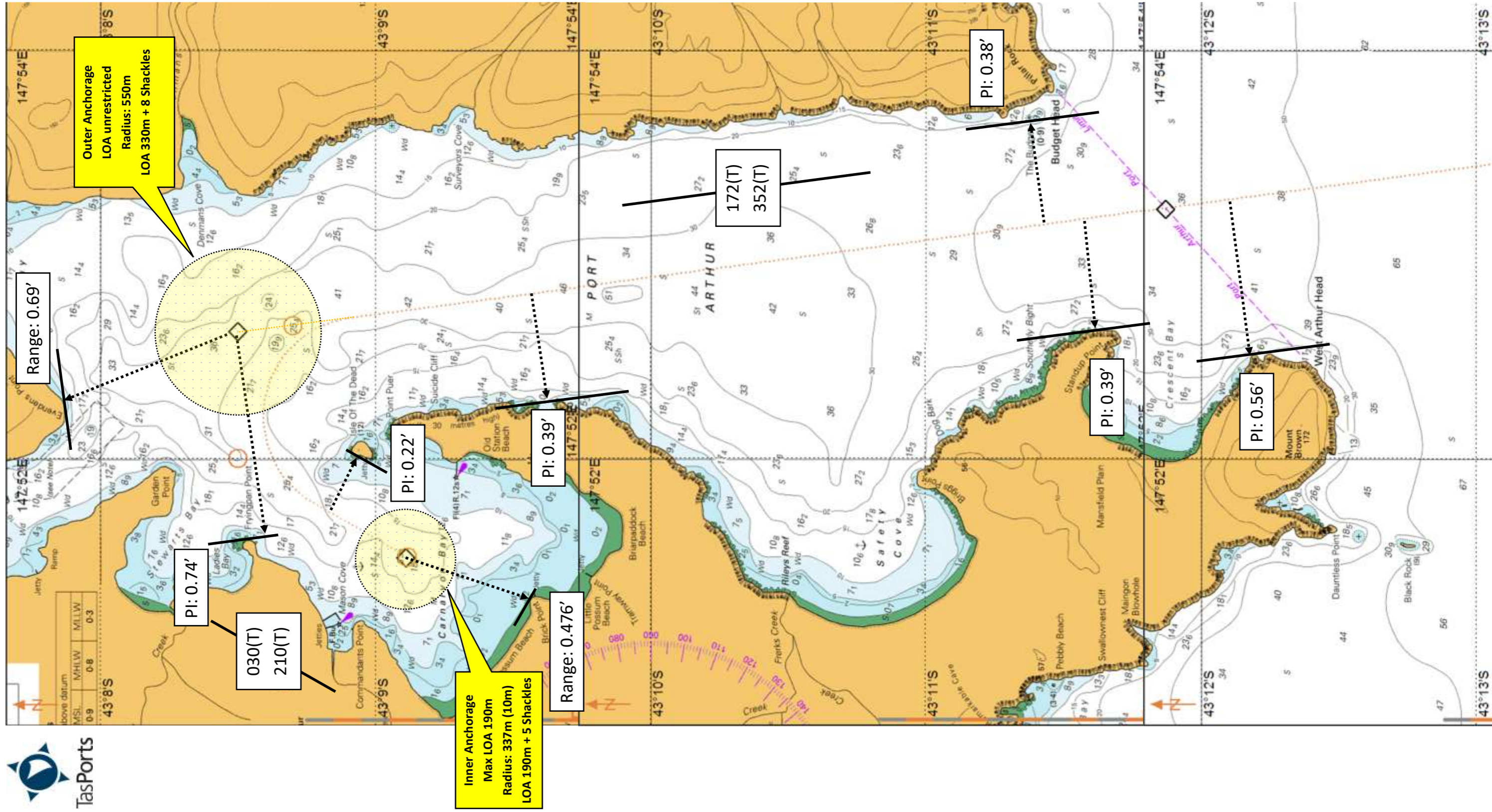


Current Date: 20180701

Review Date: 20190701

Division: Marine Services

Not for Navigation

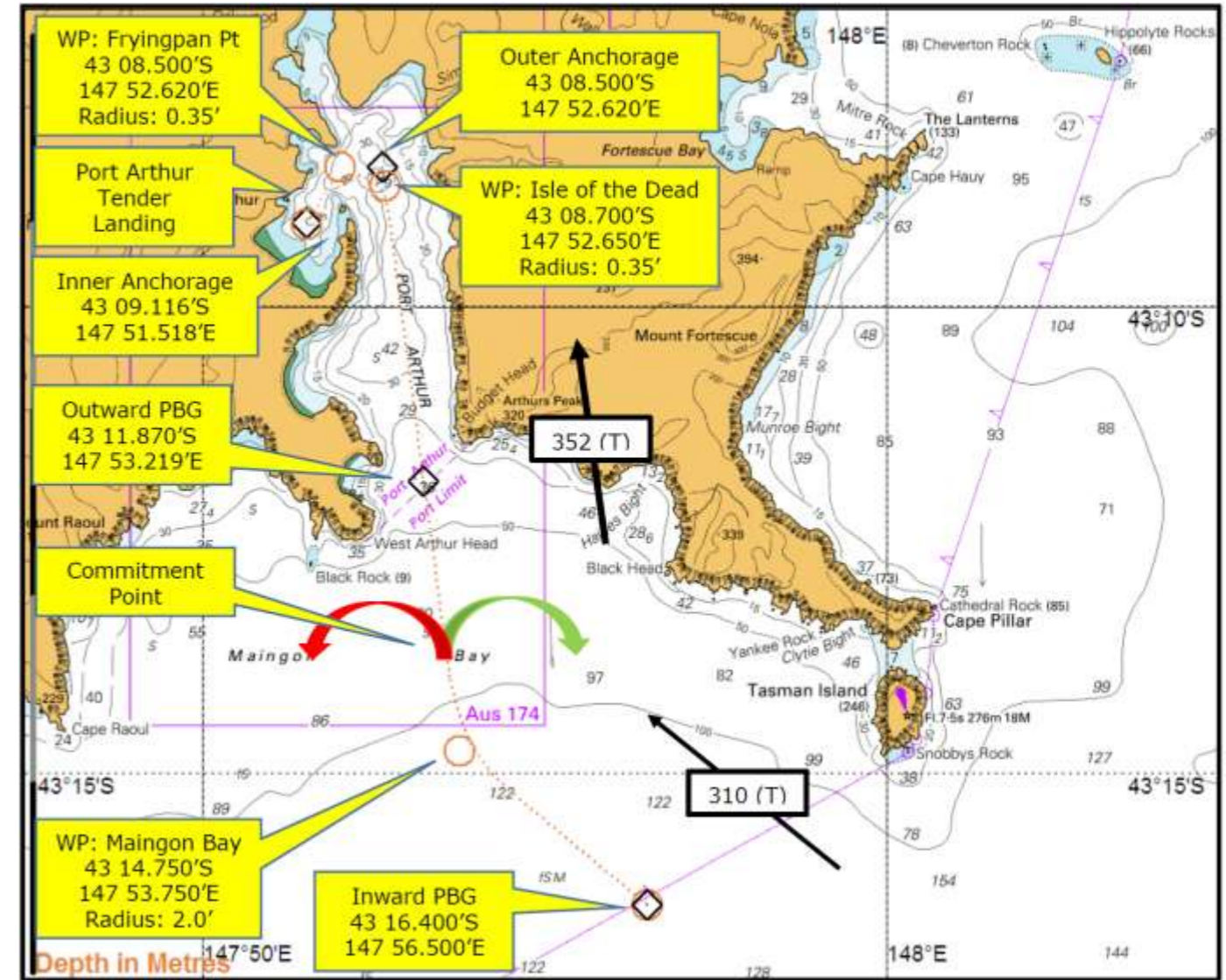


# Tasports - Port of Port Arthur Passage Plan.



Pilot:		Vessel:		IMO:	
LOA (m):		Engines tested: Ahead/Astern		Voice recorder:	<b>YES/ NO</b>
Beam (m):		Steering tested:		Pilot Flag:	<b>YES/ NO</b>
Draft Fwd (m):		Anchors cleared: <i>(Fjord fashion)</i>		Gyro Error:	
Draft Aft (m):		Min Depth (LAT):		VHF Radio Comms:	<b>08/12/16</b>
Displacement:		<i>plus Tide:</i>		Con held by:	
Gross Tonnage:		Available Water:		Tides: Referenced to	
Propulsion: (No & Type)		<i>less Draft:</i>	-	LW/HW	
Rudders: (No/Type/Deg)		UKC - Static: Tasports 1.6m		LW/HW	
Thrusters - Fwd: (No & Capacity)		<i>less Squat</i> <sup>1</sup> @ kts:	-	LW/HW	
Thrusters - Aft: (No & Capacity)		<i>less Pitching/ Rolling:</i>	-	Wind: Forecast	
Expected transit speed:		UKC - Dynamic:		Current: Expected	
Anchor Position:		Anchor & cable:			
Manoeuvring peculiarities/ Equipment Defects:					
Traffic/ Remarks: Local ferry - Marana Recreational craft - yachts, fishing boats, power driven craft. Fishing buoys and craypots. In case of rough seas/ heavy swell allowance should be made to maintain min Static UKC. Relevant Chart - Aus 174					
Pilot's Signature:		Date/Time - MPX complete:		Master's Signature:	

1. Squat(m) =  $C_b \times V(\text{kts})^2 / 100$ .



W/P	Lat	Long	Radius Of Turn (nm)	Dist (nm)	Course In (T)	Course Out (T)
<b>PBG to Outer Anchorage (Vessel LOA unrestricted)</b>					↓	↑
Inward PBG	43 16.40S	147 56.50E		3.31'	310	
WP: Maingon Bay	43 14.75S	147 53.75 E	2.0'	5.60'	352	172
Outer Anchorage	43 08.50S	147 52.62E				
<b>PBG to Inner Anchorage (Vessel LOA &lt;=190m)</b>						
Inward PBG	43 16.40S	147 56.50E		3.31'	310	
WP: Maingon Bay	43 14.75S	147 53.75 E	2.0'	5.48'	352	172
WP: Isle of the Dead	43 08.70S	147 52.65E	0.35'	0.51'	293	113
WP: Fryingpan Pt	43 08.50S	147 52.00E	0.35'	0.40'	210	030
Inner Anchorage	43 09.116S	147 51.518E				
<b>Outward PBG</b>						
Outward PBG	43 11.870S	147 53.219E				