



# Passage Plan - Port of Coles Bay - Coastal Cruise



Current Date: 20180701  
Review Date: 20190701  
Division: Marine Services

Pilot:		Vessel:		IMO:	
LOA (m):		Engines tested: Ahead/Astern		Voice recorder:	<b>YES/ NO</b>
Beam (m):		Steering tested:		Pilot Flag:	<b>YES/ NO</b>
Draft Fwd (m):		Anchors cleared: (Fjord fashion)		Gyro Error:	
Draft Aft (m):		Min Depth (LAT):	<b>12.0m</b>	VHF Radio Comms:	<b>08/12/16</b>
Displacement:		plus Tide:		Con held by:	
Gross Tonnage:		Available Water:		Tides: Referenced to	<b>Coles Bay</b>
Propulsion: (No & Type)		less Draft:	-	LW/HW	
Rudders (No/Type/Deg):		UKC - Static: Tasports 1.6m		LW/HW	
Thrusters - Fwd: (No & Capacity)		less Squat <sup>1</sup> @ kts:	-	LW/HW	
Thrusters - Aft: (No & Capacity)		less Pitching/ Roll- ing:	-	Wind: Forecast	
Expected transit speed:		UKC - Dynamic:		Current: Expected	
Passage:					
Manoeuvring peculiarities/ Equipment Defects:					
Traffic/ Remarks: Local ferry - Recreational craft - yachts, fishing boats, power driven craft.  In case of rough seas/ heavy swell allowance should be made to maintain min Static UKC. Relevant Chart - Aus					
Pilot's Signature:		Date/Time - MPX complete:		Master's Signature:	

1. Squat(m) = Cb x V(kts)<sup>2</sup>/100.

#	W/P	Lat (S)	Long (E)	R (nm)	W/P-W/P	Course	Dist
1	PBG Tourville	42 08.300	148 22.880	1.00			
2	Wineglass Bay anchorage	42 10.000	148 18.500	0.00			
3	WGB Entrance	42 09.610	148 19.500	1.50			
4	Lemon Rock	42 10.560	148 22.600	1.00			
5	Degerando	42 17.630	148 20.215	1.50			
6	Sandspit Point	42 16.920	148 15.650	1.00			
7	Bryans	42 15.500	148 14.500	1.00			
8	Promise E	42 11.750	148 14.500	1.00			
9	Fleurieu E	42 10.400	148 14.700	1.00			
10	NE Freycinet	42 08.700	148 16.400	0.50			
11	Honeymoon Bay	42 08.200	148 17.400	0.25			
12	Coles Bay anchorage	42 07.930	148 17.440	0.00			
13	Fleurieu W	42 10.400	148 13.500	1.00			
14	Promise W	42 11.750	148 11.480	1.00			
15	Schouten Reef	42 17.000	148 13.100	1.00			
16	Sandstone Point	42 19.150	148 13.100	1.00			
17	Faure	42 20.610	148 15.000	1.50			
18	Sonnerat	42 21.320	148 22.020	1.00			
19	Sonnerat 2	42 21.320	148 22.020	0.75			
20	Taillefer S	42 22.570	148 18.920	0.75			
21	Ile des Phoques	42 24.600	148 08.900	0.50			
<b>TOTAL:</b>							

### Max LOA

For entry to Wineglass Bay on a vessel by vessel basis, and subject to prevailing weather.

For entry to Coles Bay, max LOA 105m.

For coastal passage nil restrictions.

### Max drafts

Least depth in passage 12.0m at western extension to Schouten Passage track. Vessels to adjust speed in order to maintain UKC of not less than 1.60 m.

### Channel width

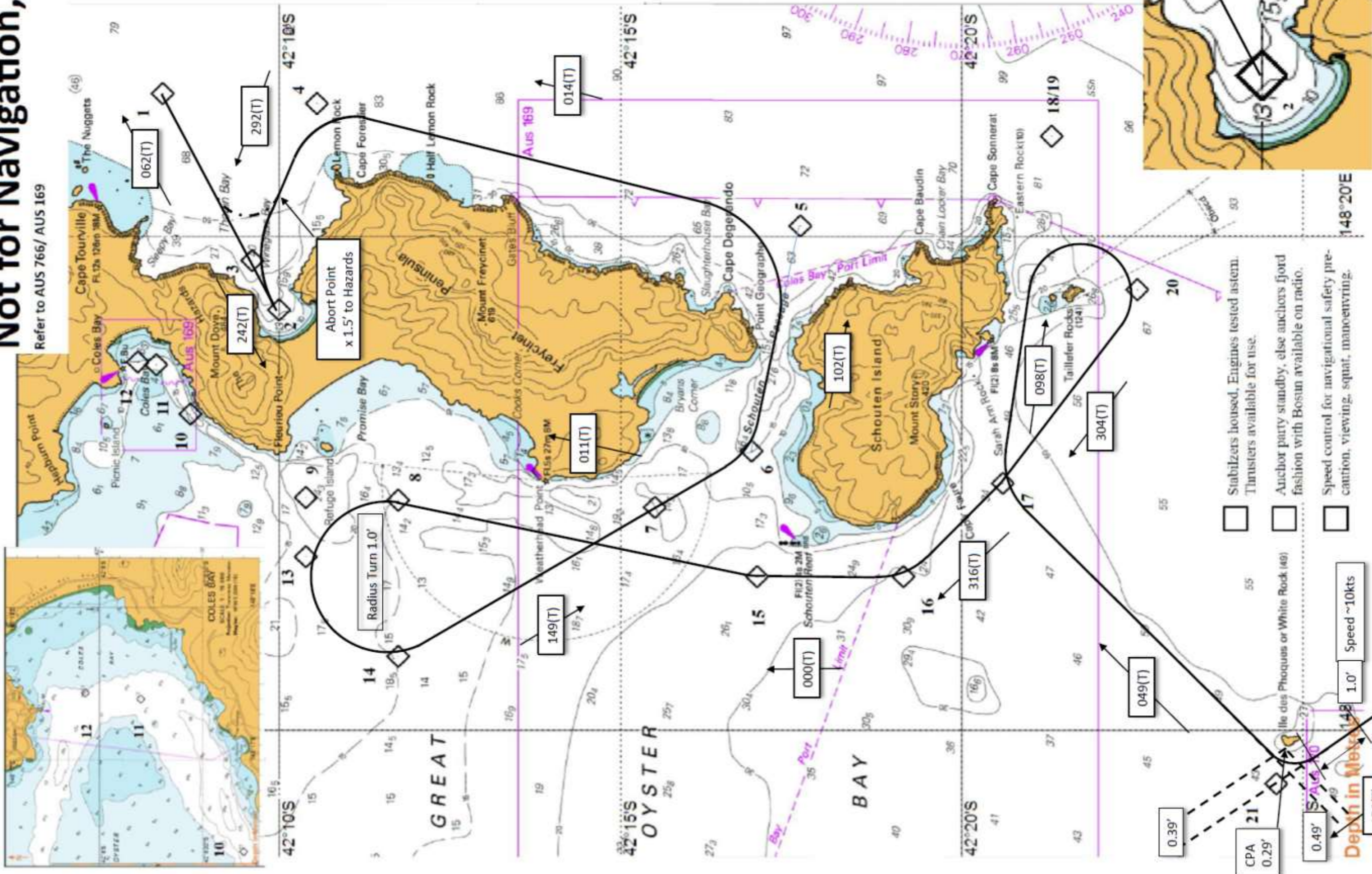
Wineglass Bay: 0.489' (906m) at entrance to the bay.

Schouten passage: 0.395' (731m) from the 10m contour to the south to passage rock in the North.

Hen & Chicken: 0.467' (865m) from the 10m contour in the south (north of Taillefer rock) to Schouten Island in the North.

# Not for Navigation,

Refer to AUS 766/ AUS 169



Abort Point  
x 1.5' to Hazards

Radius Turn 1.0°

- Stabilizers housed, Engines tested astern.
- Thrusters available for use.
- Anchor party standby, else anchors fjord fashion with Bostin available on radio.
- Speed control for navigational safety precaution, viewing, squat, manoeuvring.

CPA 0.29'

0.39'

0.49'

Depth in Metres

1.0°

Speed ~10kts

