



Tasports Passage Plan: Port of Hobart: Zone A—Mac 2/3—PST

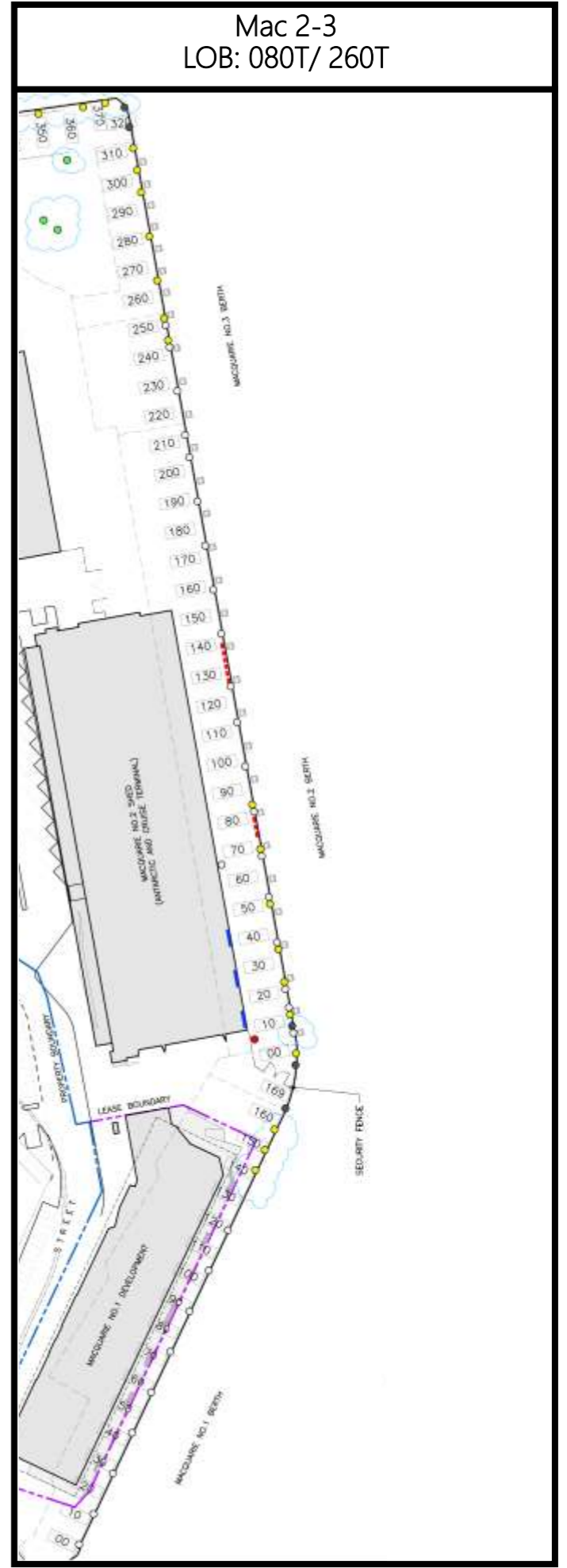
Pilot:		Vessel:		IMO:	
Berth:	Depth: (LAT)	Side: to	Moorings:	First: Line	
Wind: Forecast	Current: expected		Wind: actual	Current: actual	
LOA:	Engines Tested:	Voice recorder:		YES/ NO	
Beam:	Steering tested:	Pilot Flag:		YES/ NO	
Draft fwd:	Anchors cleared:		Gyro Error:		
Draft aft:	Comms: VHF	06 / 08 - Tugs 12 - VTS/Port		Min Depth: (LAT)	
Displacement:	Tug FWD:		plus Tide:		
Gross Tonnage:	Tug AFT:		Available Water:		
Propulsion: (No/ Type)	SWL Ship bollards:		less Draft:		
Rudders: (No/ Type/ Deg)	Tides: Ref to	HOBART (LAT)		UKC – Static: Tasports 1.6m	
Thrusters - Fwd:	LW/HW			less Squat: @ kts	
Thrusters - Aft:	LW/HW			less Pitch/Roll:	
Expected transit speed:	LW/HW			UKC - Dynamic:	
<b>Manoeuvring peculiarities/ Equipment Defects:</b>					
<b>Traffic/ Remarks:</b> Commercial traffic – Expected Shipping, Local ferries, Fishers, Fish pen towing Recreational craft – canoes, rowers, yachts, power driven craft Vessels at Anchorage					
Con held by: MASTER / OOW / PILOT					
Pilot's Signature		MPX Complete: Date/Time		Master's Signature	

**Mac 2-3 PST to PBG (Departure)**

Lat	Long	Radius	Co.	Dist
42 52.948S	147 20.436E	0'	170	0.07'
42 53.018S	147 20.454E	0'	098	0.30'
42 53.060S	147 20.848E	0.25'	138	2.47'
42 54.900S	147 23.090E	2.0'	190	0.52'
42 55.407S	147 22.965E	0'		
Total Dist:				3.35'

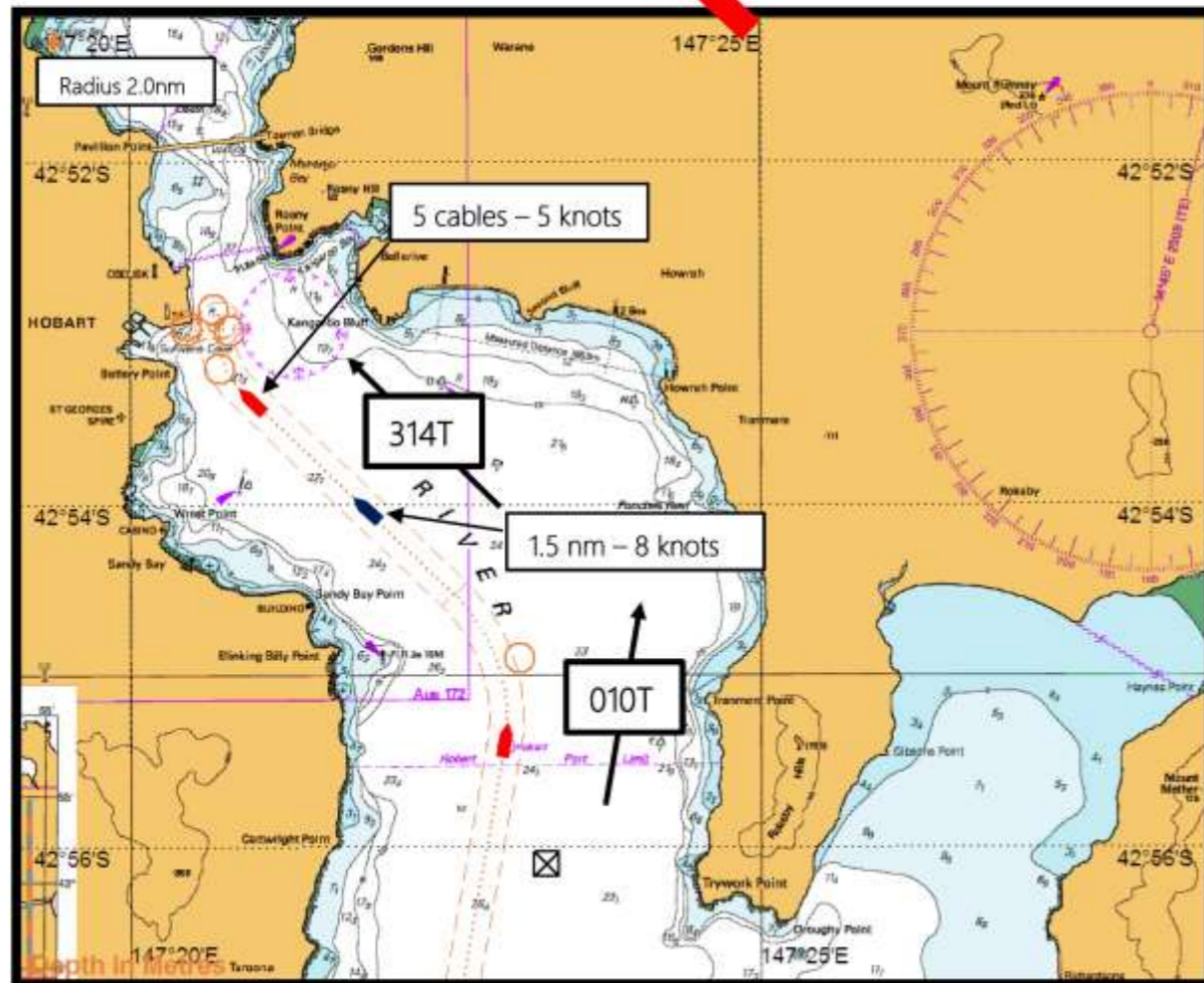
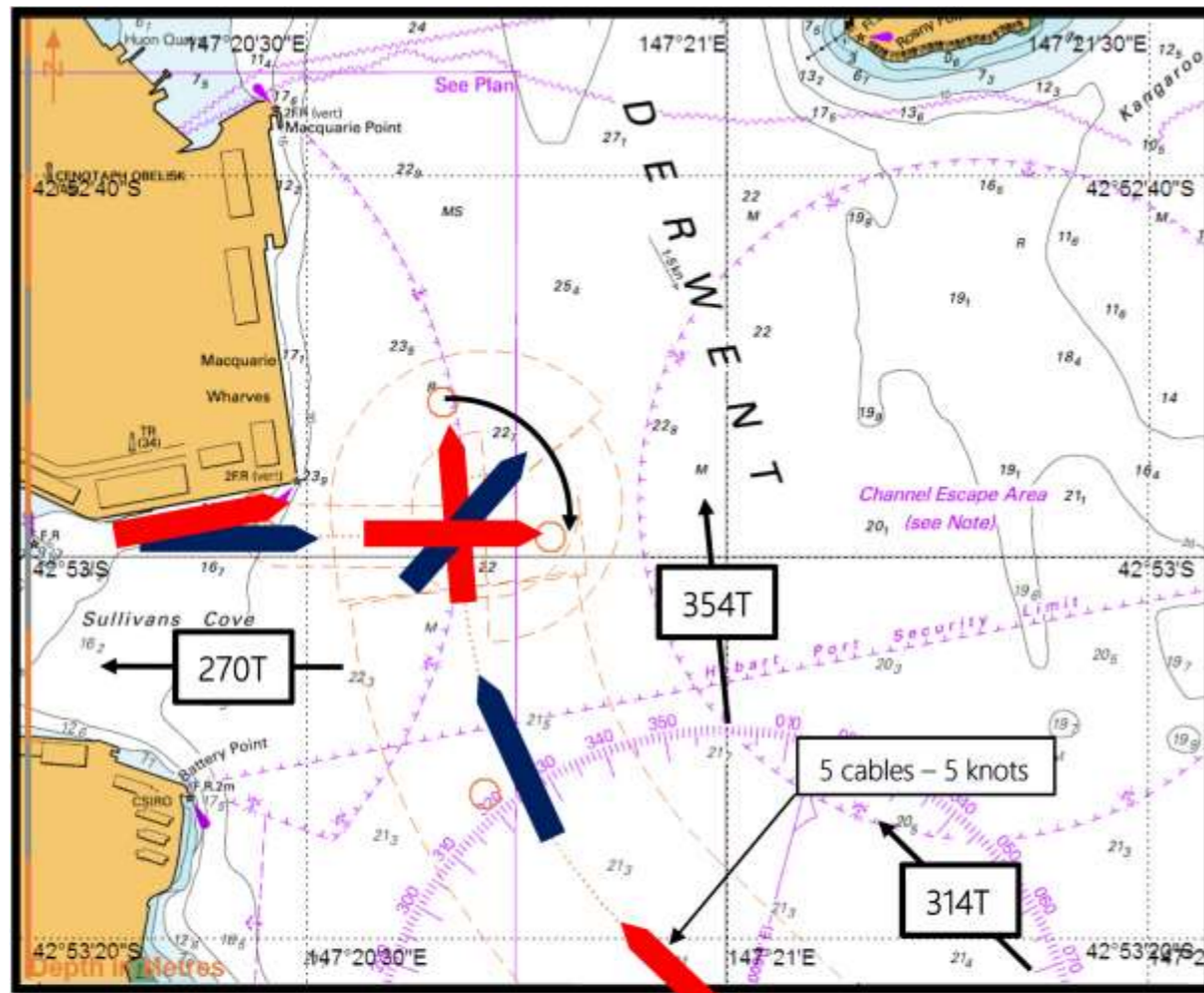
**PBG to Mac 2-3 PST (Arrival)**

Lat	Long	Radius	Co.	Dist
42 55.407S	147 22.965E	0'	010	0.52'
42 54.900S	147 23.090E	1.0'	314	2.43'
42 53.207S	147 20.712E	0.5'	354	0.29'
42 52.865S	147 20.662E	0.027'	130	0.10'
42 52.982S	147 20.789E	0.027'	270	0.23'
42 52.981S	147 20.450E	0'	345	0.03'
42 52.948S	147 20.436E	0'		
Total Dist:				3.59'

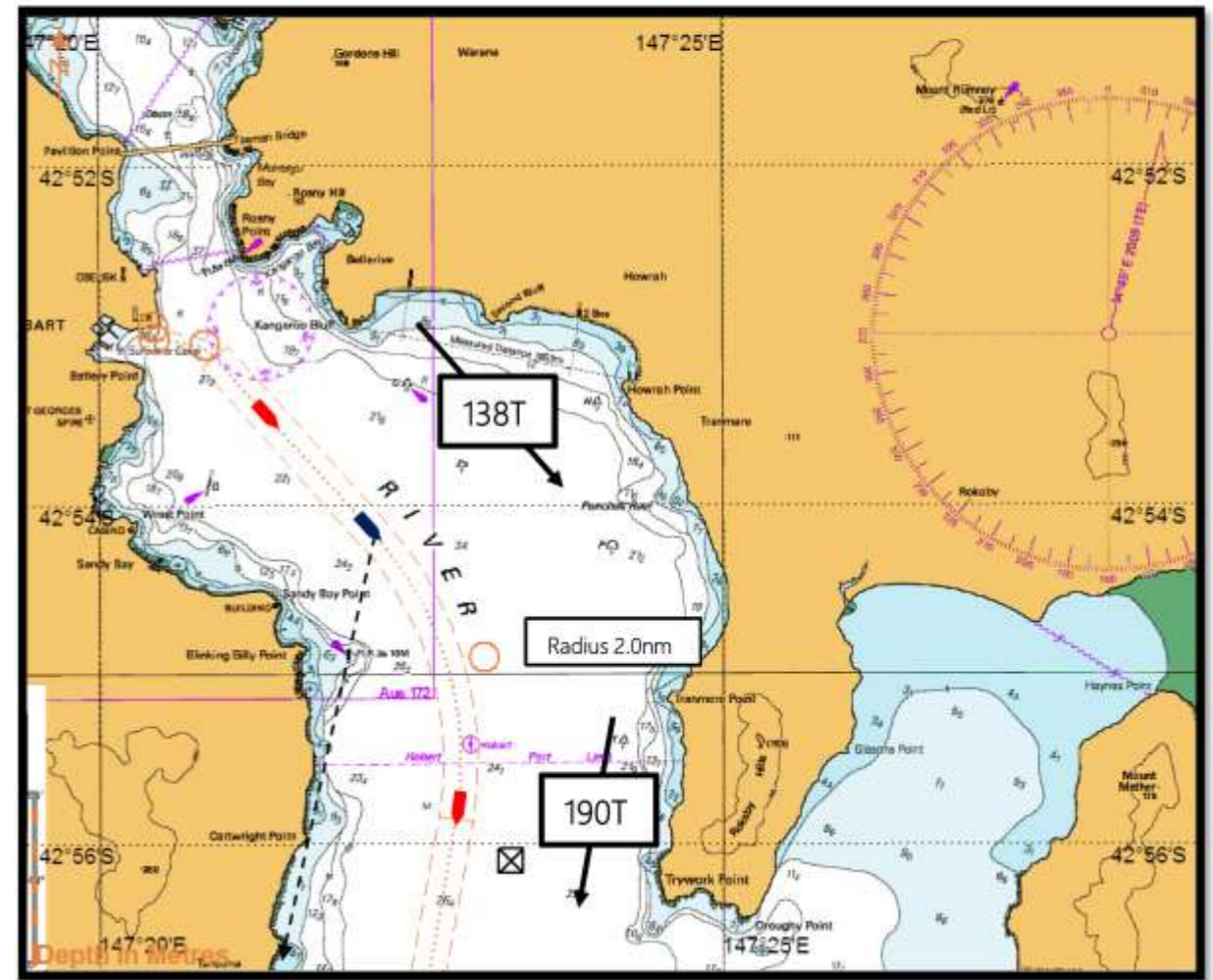
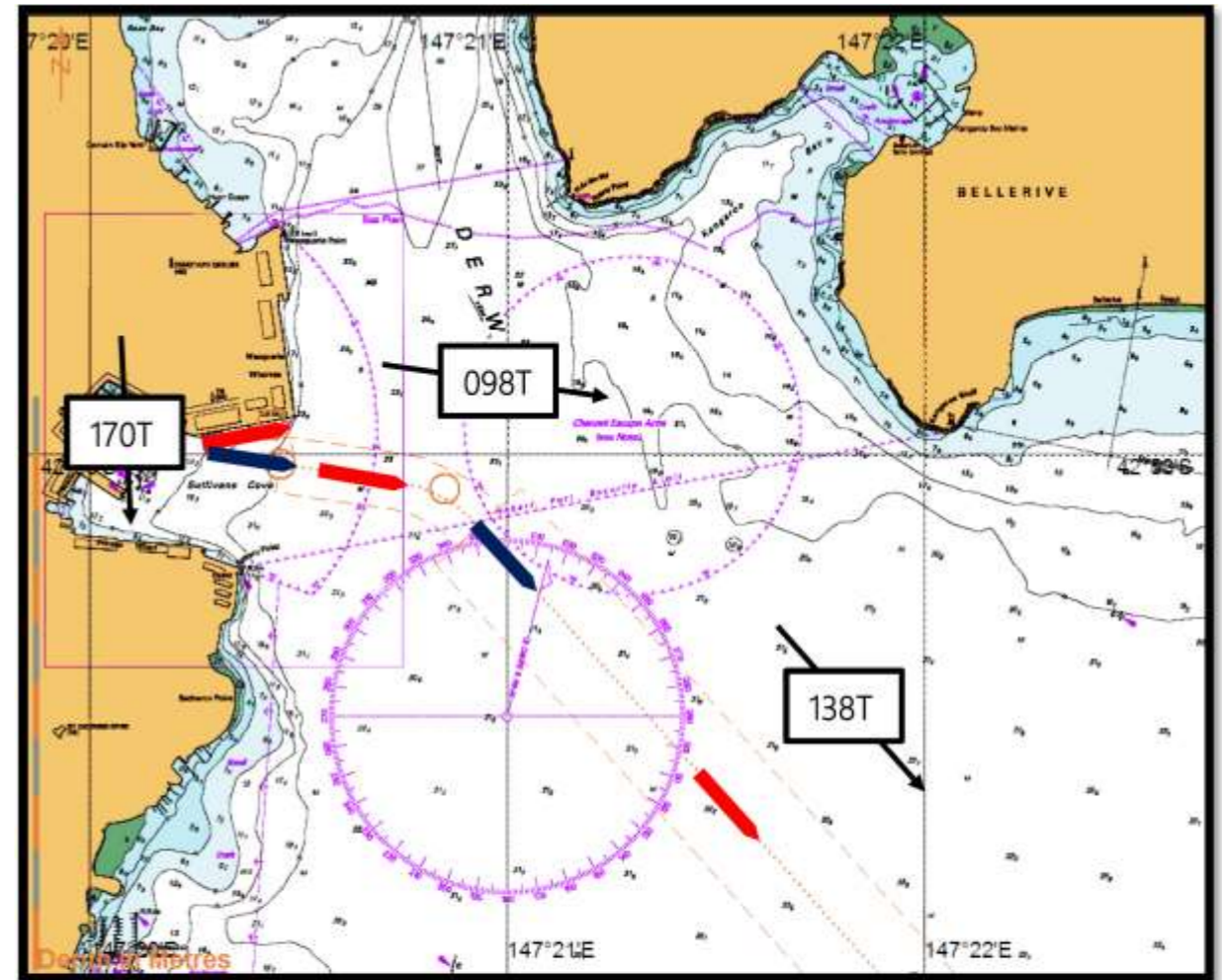


Current Date: 20180701  
Review Date: 20190701  
Division: Marine Services

Arrival



Departure



Not for Navigation.