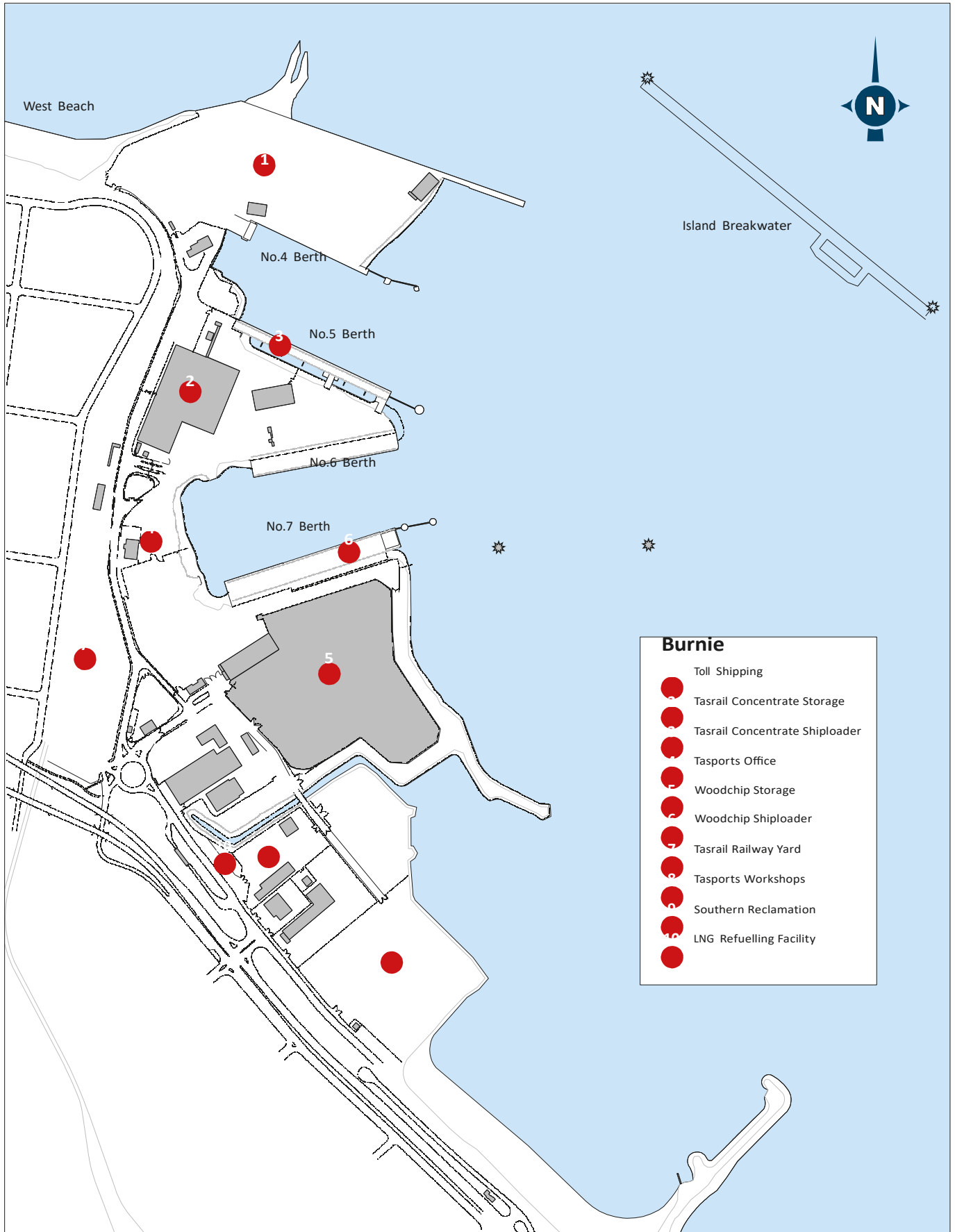


Port of Burnie

Port Map



TasPorts



Port of Burnie



Overview

Approaches

The Port of Burnie is situated on the western shore of Emu Bay and has easy access.

The Bay is two miles wide and one mile deep facing in a northerly direction.

The bottom is sand and clay interspersed with patches of reef and rock particularly in the south eastern sector of the Bay.

The principal danger off the port is Blackman Reef, with shallow water extending one mile seaward from the western shore of the Bay.

Vessels approaching the port from the west should by day, keep two orange beacons on the shoulder of Round Hill open to the north, and then turn onto the main harbour leads which are in transit 224 degrees true. By night, keep in the white sector of Round Hill Point Light until the two lit red triangles of the main leads come into transit.

Vessels approaching from the east should keep well off until clear of Round Hill Point and then turn onto the main leads by day, or the lit blue triangles by night.

Vessels may anchor on the main leads in the vicinity of the pilot boarding ground.

The port is protected by two breakwaters. The inner, founded at the inner end of Blackman Reef, lies in a 110 degrees direction and is 381 metres long. The other is an island structure and lies in a 130 degrees direction and is 488 metres long. The western end of this breakwater bears 045 degrees true, 213 metres from the eastern end of the inner breakwater.

The port has deep water with 10.0 metres in the approaches to the berths.

The diameter of the swinging basin is 460 metres.

There is no restriction on night movements.

Pilotage is compulsory for vessels over 35 metres in length and vessels requiring the services of a pilot should proceed to a position on the line of the main leads with Round Hill Light bearing 170 degrees true approximately 2 nautical miles from the eastern end of the Island Breakwater and not pass 41 deg. 02 min. south unless a pilot has boarded.

Navigation Lights and Aids

Round Hill Point

Latitude: 41 deg. 04 min. South.

Longitude: 145 deg. 58 min. East.

Light: Fl. W.R. 5 sec. 30 m. 18/14M.

Burnie Harbour Approach Leads

Front lead: Light F.B. 17m.

Latitude 41 deg. 03.776 South.

Longitude 145 deg. 54.852 East.

Back lead: Light F.B. 34m.

Latitude 41 deg. 03.943 South.

Longitude 145 deg. 54.641 East.

The front lead is situated on a building on the foreshore at an elevation of 17 metres and by day is an orange triangle apex up. By night it shows as a blue triangle apex up. The back lead is on a pole in a clearing 223 degrees 42 minutes True approximately 420 metres from the front lead.

By day it is an orange triangle apex down elevation 34 metres and by night it shows as a blue triangle apex down.

Island Breakwater

On the SE end a fixed all round green neon light; on the NW end a fixed all round white neon light, both on steel towers 16.5 metres above high water.

Berth Leading Lights

No. 6 and No. 7 Berths – two fixed blue, in transit 260 degrees True, midway between berths.

Other Lights

Two red Beacons marking the limit of the dredge cut are in line east/west in the south east area of the port. These Beacons are lit with red lights occ.1.3 sec.

Note: At night, a fixed red light is exhibited from the seaward corner of each berth.

Port of Burnie



Overview (continued)

Supporting Information

Latitude: 41 degrees 3 minutes South.

Longitude: 145 degrees 55 minutes East.

VTS

Tasports Vessel Traffic Service (VTS) centre manages all shipping movements and berth and pilotage allocations.

Communications

The VTS centre is manned 24 hours and operates a radio service on the following frequencies:

VHF Channel 16, 12 and 67

Radio Call Sign: "Burnie VTS"

Telephone: 03 6380 3013

Email: radio.room@tasports.com.au

Tidal Information

H.A.T. 3.60 metres

M.H.W.S. 3.27 metres

M.H.W.N. 2.98 metres

M.S.L. 1.97 metres

M.L.W.N. 0.96 metres

M.L.W.S. 0.67 metres

L.A.T. 0.00 metres

Australian Height Datum is 1.938 metres above port datum.

Wharf Heights

All wharves are 5.6 metres above port datum which is 0.00 metres.

General Information

Mechanical Equipment

A comprehensive fleet of mechanical equipment is available including container handling forklifts of up to 30 tonnes capacity.

Weighbridge

Within the port is a weighbridge, capacity 60 tonnes, platform dimensions 18.3 metres by 2.75 metres.

Hazardous Cargoes

Hazardous cargoes of most categories are handled as per Australian Standard 3846.

Bunkers

Heavy fuel oil and diesel oil is available, delivered by road tankers and manifold at #5 berth.

Fenders

Good fender systems are in place at all berths.

Cranes

An 80 tonnes capacity Post Panamax single lift portainer is situated on No. 6 Berth.

This portainer may also be used for bulk grabbing, log loading and heavy lifts.

Shiploaders

A bulk ore loader is at No. 5 berth – capacity 1,000 tonnes per hour.

A bulk woodchip loader is at No. 7 berth – capacity 1,200 tonnes per hour.

Water

Fresh water is readily available – delivery rate approximately 50 T.P.H.

Hoses supplied by B.P.C.

Repairs

Engineering firms with extensive workshops are situated nearby.

Garbage Disposal

Garbage removal conducted by contractors.

Tugs

Up to three tugs, each twin screw about 40T bollard pull are available. Two tugs are stationed in the port and available on request. Shore gangways are available as required.

Airport

The nearest airport is Burnie Airport. The runway is 1650 metres long and 30 metres wide which limits it to a Classification C type aircraft. It is situated about 20km to the west of the seaport, at the town of Wynyard.

Port of Burnie

Overview (continued)



Pilotage

Pilotage Compulsory

No vessel other than a vessel exempted from pilotage shall be navigated within the port unless a licensed pilot is employed for the conduct of such a vessel.

Pilot Boarding

About eight knots is most suitable for pilot pick up with ladder complete with man ropes on the lee side one metre above the water.

Distances from Burnie

Adelaide 565 miles
 Brisbane 1,026 miles
 Devonport 24 miles
 Fremantle 1,734 miles
 Gabo Island 278 miles
 Hobart 313 miles
 Launceston, (Bell Bay) 46 miles
 Melbourne, South Channel 225 miles
 Melbourne, West Channel 216 miles
 Naracoopa, (King Island) 108 miles
 Newcastle 581 miles
 Portland 261 miles
 Port Kembla 484 miles
 Sydney 525 miles
 Stanley 34 miles
 Strahan 210 miles
 Townsville 1,605 miles
 Auckland 1,530 miles
 Bombay 5,714 miles
 Hong Kong 5,431 miles
 Kobe (Japan) 4,876 miles
 London (via Suez) 11,112 miles
 London (via Cape) 12,002 miles
 New York (via Panama) 9,947 miles
 San Francisco 6,910 miles
 Singapore (via Cape Leeuwin) 3,930 miles
 Singapore (via Torres Strait) 4,776 miles
 Vancouver 7,300 miles
 Wellington 1,380 miles

Berth Information

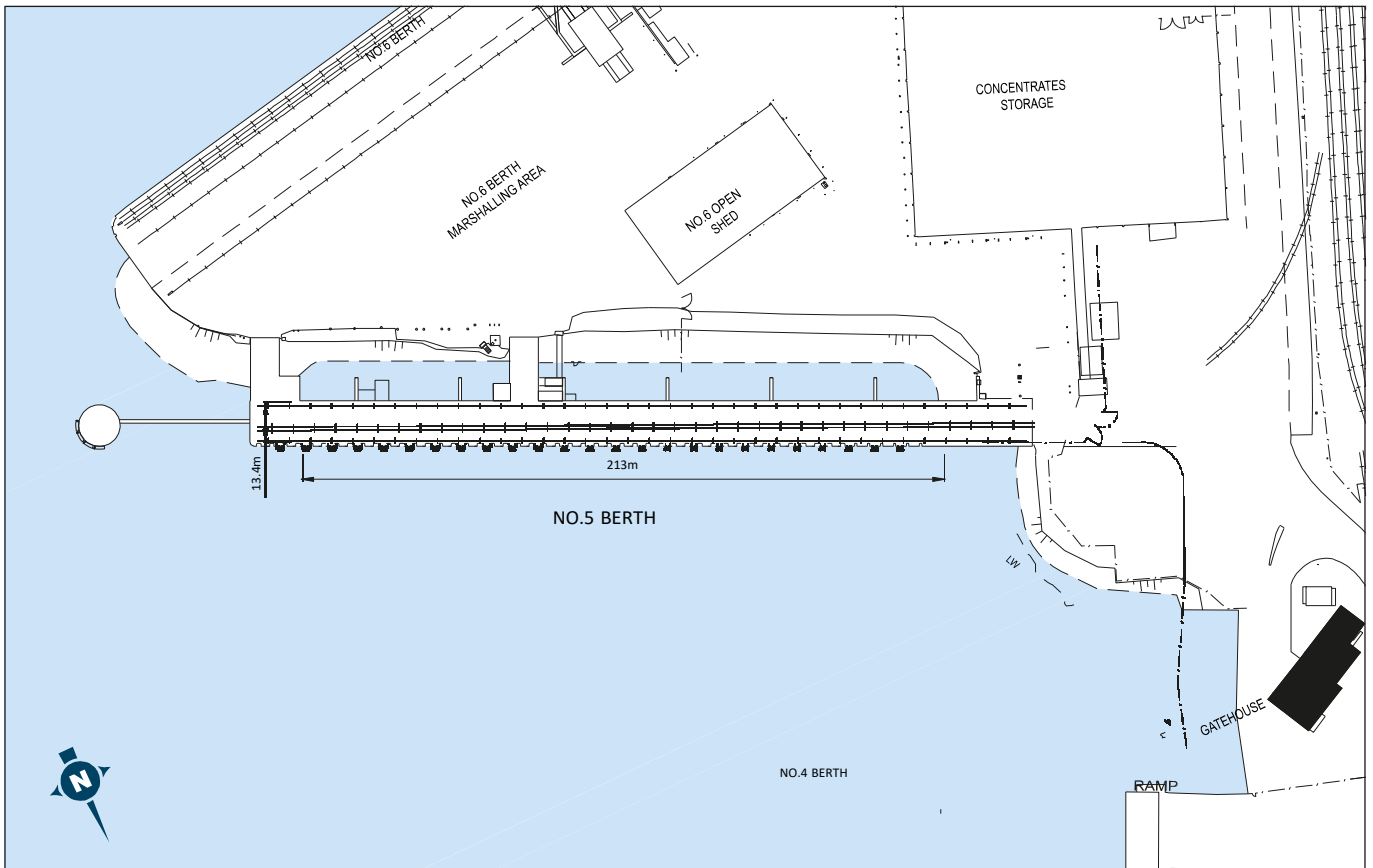
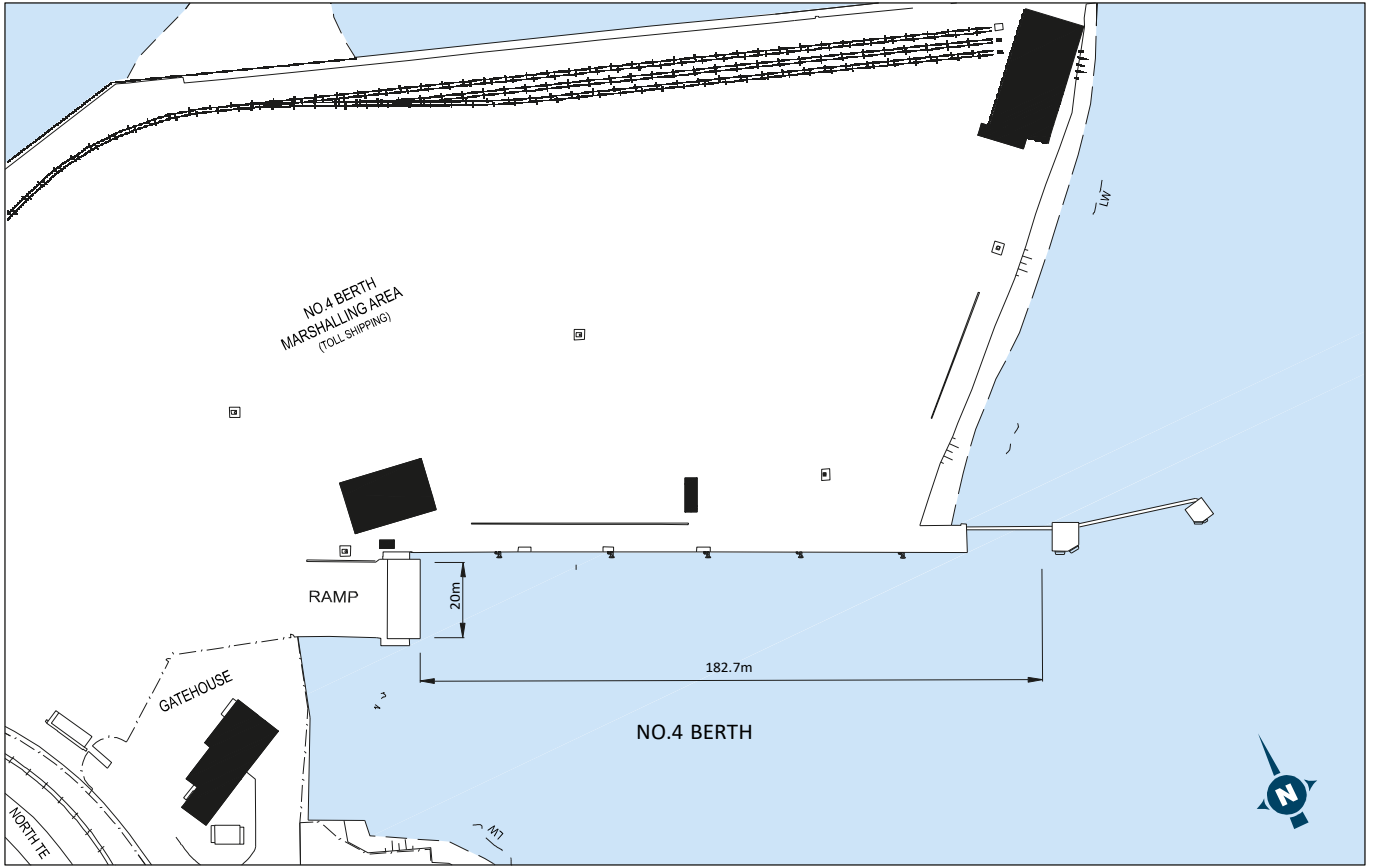
See tables on pages 43 and 44.

Port of Burnie

No. 4 Berth/No. 5 Berth



TasPorts



Port of Burnie

No. 6 Berth/No. 7 Berth



TasPorts

